

# **SALT LAKE CITY HISTORIC LANDSCAPES REPORT**

## **Executive Summary**

### **Artesian Well Pocket Park**

**SLCHLR NO. 15**

Artesian Well Pocket Park is located in the Central City Neighborhood, Salt Lake City, Salt Lake County, Utah. It is sited on the southwest corner of 500 East and 800 South. The setting of the park is considered historically significant, dating to the settlement in the Salt Lake Valley; however the features within the park are not.

In 1979 a pocket-park was established at this historic artesian well site. The quarter-acre park is located within residential/retail zoning district. Across the street to the east are single family homes, and to the west and to the south are single-family homes and low-density apartments, many documented as historic residences dating as early as 1890. To the north across the street are additional single-family homes and two retail shops located on the west and east corners of the intersection at 500 East 800 South.

Located on a corner lot, Artesian Well Pocket Park is accessed from both the 500 East and 800 frontages via four specific entrance points. Primary pedestrian access to the rectangular-shaped park is from the southwest corner of the intersection at 500 East 800 South. A secondary access is located along 800 South, with two more from the 500 East frontage.

The Artesian Well Pocket Park was originally a stock watering hole for oxen to rest and hydrate while travelling between Little Cottonwood Canyon's granite quarry and the construction site of The Church of Jesus Christ of Latter-day Saints' Salt Lake Temple in downtown Salt Lake City. The aquifer sourced to the artesian well comes from a large recharge area that extends from Red Butte Creek underneath the University of Utah.

# SALT LAKE CITY HISTORIC LANDSCAPES REPORT

## Artesian Well Pocket Park

SLCHLR NO. 15

**Location:** Artesian Well Pocket Park is located in the Central City Neighborhood, Salt Lake City, Salt Lake County, Utah. It is located on the southwest corner of 500 East and 800 South (see fig. 1).

Latitude: 40° 45'05.94" N, 111° 52' 38.14" W (southwest corner of the park, Google Earth)

**Significance:** The setting of the Artesian Well Pocket Park is considered historically significant, dating to the settlement in the Salt Lake Valley; however the features within the park are not (Landscapes 4).

**Description:** In 1979 a pocket-park was established at this historic artesian well site (Landscape). The quarter-acre park is located within residential/retail zoning district. Across the street to the east, to the west and to the south are single-family homes and low-density apartments, many documented as historic residences dating as early as 1890. To the north across the street are additional single-family homes and two retail shops located on the west and east corners of the intersection at 500 East 800 South (827; Central; Landscape).

Located on a corner lot, the Artesian Well Pocket Park is accessed from both the 500 East and 800 frontages via four specific entrance points. Primary pedestrian access to the rectangular-shaped park is from the southwest corner of the intersection at 500 East 800 South. A secondary access is located along 800 South, with two more from the 500 East frontage. The surrounding area is relatively flat. One-hour vehicular parking is allowed along 800 South (see fig. 2).

The northwest entrance, located along 800 South, is defined by a red brick wall. A decorative metal light fixture is located west of this entrance. Red and grey brick pavers and two types of exposed aggregate concrete paving run the length of the walkway along 800 South (see figs. 3-5).

Passing through the northwest entrance of the park, freestanding walls frame a mounded outdoor grass hill to the west. To the east, brick retaining walls are used to form grassy terraces, partially enclosed by the upper extensions of the walls. The northwest entrance ultimately opens into a courtyard featuring a two-tiered planter along the southern brick wall perimeter. The design of structure suggests that the original function was a fountain, with the remnants of old piping and a pump casing found in the rear vicinity. Just east of the two-tiered planter is a decorative black metal light fixture, a small brick planter box containing a single Juniper shrub (*Juniperus sp.*), and an Oak tree (*Quercus sp.*) is located a small plaza. West of the two-tiered planter is an additional Oak tree (*Quercus sp.*) and another decorative black metal light fixture. The western edge of the park is defined by a bark-mulch strip, with a silver-colored abstract sculpture set on top of a white pedestal demarcating the area (see figs. 6-14).

Opposite the two-tiered planter to the north, a raised seating area marks the east edge of the northwest entrance of the park and the west edge of the artesian well. An Oak tree

(*Quercus sp.*) and a perimeter of concrete-edged grass encloses the space, which contains a decorative wood and metal bench and additional black metal light fixture. The area is surfaced with rectangular-shaped, gray-toned concrete unit pavers laid out in an offset running bond pattern. The brick wall retains the adjacent raised space as well as rear side of the artesian well, which is located to the west (see figs. 15-18).

Continuing east from inside the park, south of the raised seating area, are three additional entrances into the park. Descending an angular set of stairs, the southernmost entrance from the 500 East sidewalk is bordered by a freeform clipped shrub mass of *Pyracantha* (*Pyracantha sp.*) and a single Linden tree (*Tilia sp.*). An adjacent entrance from the east is flanked by additional massing of *Pyracantha* (*Pyracantha sp.*) and two Oak trees (*Quercus sp.*). Nestled in the south shrub mass are four concrete rectangular concrete blocks, with circular metal piece mounted in the third block from the left. The purpose of the blocks is unclear, although it appears they are the remnants of a forgotten landscape art assemblage (see figs. 19-25).

The main entrance into the park is located at the southwest corner of 500 East and 800 South. Along the west edge of the entrance, a brick wall encases the artesian well. Numerous minerals are documented to flow from the well, which has total dissolved solids between 700 – 100,000 parts per million. In 1936 from January to December, the well was reported to flow at rates of 2-20 gallon per minute from a 2-inch well case located at a well depth of 130 feet. Today, three spigots flow from the well casing, the overflow constantly emptying into a drain below. A French drain is also located at the base to catch spills (see figs. 26-30) (800).

Along the east edge of the main entrance is an additional small wood and metal bench and rectangular concrete drinking fountain. The drinking fountain no longer functions and has fallen into disrepair (see figs. 31-33).

## **History:**

The Artesian Well Pocket Park is located immediately west of the Central City Local Historical District, which is one of the oldest residential neighborhoods of Salt Lake City reflective of the “Plat of the City of Zion”. The historic district is two blocks wide. The northern portion of the district houses larger, upscale residential homes and apartments while the southern portion contains simple bungalow and brick cottage homes. There is some concern that the district’s historical integrity has been compromised over time, the result of inappropriate infill development near intersections with major thoroughfares from 300 and 500 South (see figs. 34-35) (Historic).

The Artesian Well Pocket Park has historical significance dating back to settlement in the Salt Lake Valley. It was originally a stock watering hole for oxen to rest and hydrate while travelling between Little Cottonwood Canyon’s granite quarry and the construction site of the Church of Jesus Christ of Latter-day Saints’ Salt Lake Temple in downtown Salt Lake City. The aquifer sourced to the artesian well comes from a large recharge area that extends from Red Butte Creek underneath the University of Utah. Records as to who drilled the well and when the well was drilled are unknown (800; Bills; Sokolow).

On March 14, 1936, the City officially filed an underwater ground claim for the well with the State Engineer for domestic and culinary purposes. Legislation further defined all water from the well found on the “surface, underground and above the land property” as publicly owned by the people of Utah, although the real estate associated with the well remained privately owned (800; Sokolow).

Sanborn maps from 1898 illustrate a one-level adobe/fire-proof dwelling and detached outbuildings were located on the southwest corner of 500 East 800 South. In the 1911 and 1950 maps, the one-level adobe/fire-proof dwelling is no longer present, and lot line adjustments have increased the parcel size. Two one-level brick dwellings with framed porches were added at the south end of the lot, leaving the north end of the parcel empty (see figs. 36-38).

Salt Lake County archival tax assessment documents indicate the earliest property owner as Edna D. Openshaw (no specific date was provided); by 1970 ownership had transferred to Don W. and Helen D. Layton, residents of Salt Lake City (Utah; Hale).

In 1975, the Central City Neighborhood Council Park Committee and the Salt Lake City recognized and discussed the need to improve the well's site. Wet slippery sidewalks, traffic and parking congestion, and run-down landscaping and maintenance concerns were primary concerns (Hale), in addition to the earlier 1965 reports of a major underground leak slowing the flow considerably (802).

In 1979 park plans were developed and the City awarded to the project to Ralph L. Wadsworth Construction Company, investing \$79,450 into betterments including walkways, grass, benches, lighting, and a well casing. Construction began on July 31, 1979 and was completed soon after. In 1983 the well casing and plumbing were upgraded (see figs. 39-40) (800; 802; Johnston; Landscapes 4).

Today the well continues to run year-round and is a popular destination for many City residents and travelers around the Wasatch Front seeking natural water with high mineral contents and no chemicals. Park enhancements in 1979 were focused on formalizing the site into a small urban park, and are indicative of numerous similar small park projects instituted in the city during the same era. A small wood and metal bench used to be located next to the two-tiered planter in 2009, and was relocated in the park near the two-tiered planter (see fig. 41) (802).

See figure 42 for the 2015 existing conditions of the Artesian Well Pocket Park.

- Sources:**
- “800 South 500 East Artesian Park.” Salt Lake City, Utah: Salt Lake City Public Utilities. Web. October 26, 2015. <<http://www.slcdocs.com/utilities/NewsEvents/news2006/news3292006.htm>>
  - “802 South 500 East Artesian Well Park.” *Salt Lake City Architectural Survey*. Salt Lake City, Utah: Salt Lake City Planning Commission, 1982. Print.
  - “827 South 500 East.” *Salt Lake City Architectural Survey*. Salt Lake City, Utah: Salt Lake City Planning Commission, 1981. Print.
  - 2012 HRO 6 Inch Orthophotography. Utah Automated Geographic Reference Center. Web. September 30, 2015. <<http://gis.utah.gov/data/aerial-photography/2012-hro-6-inch-color-orthophotography/>>

- Bills, Sarah. "Residents Getting Their Fill of Century-old Well." *Deseret Morning News*. Salt Lake City. 4 Nov. 2005. Web. October 26, 2015.  
<<http://www.deseretnews.com/article/635156645/Residents-getting-their-fill-of-century-old-well.html?pg=all>>
- "City and Community Council Map." *Community Organizations*. Salt Lake City, Utah: Salt Lake City Corporation. Web. November 2, 2015  
<<http://www.slcgov.com/commcouncils>>
- "City Well Mini Park." Salt Lake City, Utah: Salt Lake City Parks and Recreation Department. 1979. Print.
- "Color Key to Sanborn Maps." *Fire Insurance Maps*. UC Berkeley Earth Sciences and Map Division. Web. March 11, 2016.  
<<http://vm136.lib.berkeley.edu/EART/images/sandkey.jpg>>
- Glover, Eli Sheldon. "Birds-eye View of Salt Lake City, Utah 1875." Salt Lake City, Utah: Strobridge & Co. Lith., 1875. Web. January 13, 2016  
<<https://www.loc.gov/item/75696614/>>
- Google Earth, 2015. Web. 14 Oct. 2015.
- Hale, Ethel C. Letter to Shanna Sanford. 2 June 1977. TS. Parks Department, Salt Lake City, Utah.
- "Historic Preservation - Local Districts." Salt Lake City, Utah: Salt Lake City Planning Department. Web. October 3, 2015. <<http://www.slcgov.com/historic-preservation/historic-preservation-local-historic-districts>>
- Johnston, Richard A. Letter to Mayor Ted L. Wilson. 5 June 1979. TS. Parks Department, Salt Lake City, Utah.
- "Landscapes within Historic Districts Inventory, 2009." Salt Lake City, Utah: Salt Lake City Planning Department, 2009. Print.
- Salt Lake City Planning Division, 2009 Photograph Collection, Pictures No. 1, 6, and 7.
- Sanborn Fire Insurance Company. *1898 Map of Salt Lake City: Sheet 169*. Sanborn Fire Insurance Company. Web. October 28, 2015.  
<<http://content.lib.utah.edu/cdm/singleitem/collection/sanborn-jp2/id/867/rec/246>>
- . *1911 Map of Salt Lake City: Sheet 176*. Sanborn Fire Insurance Company. Web. October 28, 2015.  
<<http://content.lib.utah.edu/cdm/singleitem/collection/sanborn-jp2/id/1065/rec/439>>
- . *1950 Map of Salt Lake City: Sheet 176*. Sanborn Fire Insurance Company. Web. October 28, 2015. <<http://content.lib.utah.edu/cdm/singleitem/collection/sanborn-jp2/id/1858/rec/774>>

Sokolow, Alan. Letter to Editor of the Salt Lake Tribune. 7 September 1977. TS. Parks Department, Salt Lake City, Utah.

Utah State. *Tax Appraisal Packet for 500 E. 808 S.* Salt Lake City, Utah: Salt Lake County Archives. November 3, 2015. Print.

**Historian:** JoEllen Grandy and Siri Vlasic  
Landmark Design  
850 South 400 West, Studio 104  
Salt Lake City, Utah 84101  
801-474-3300  
Prepared on December 14, 2015

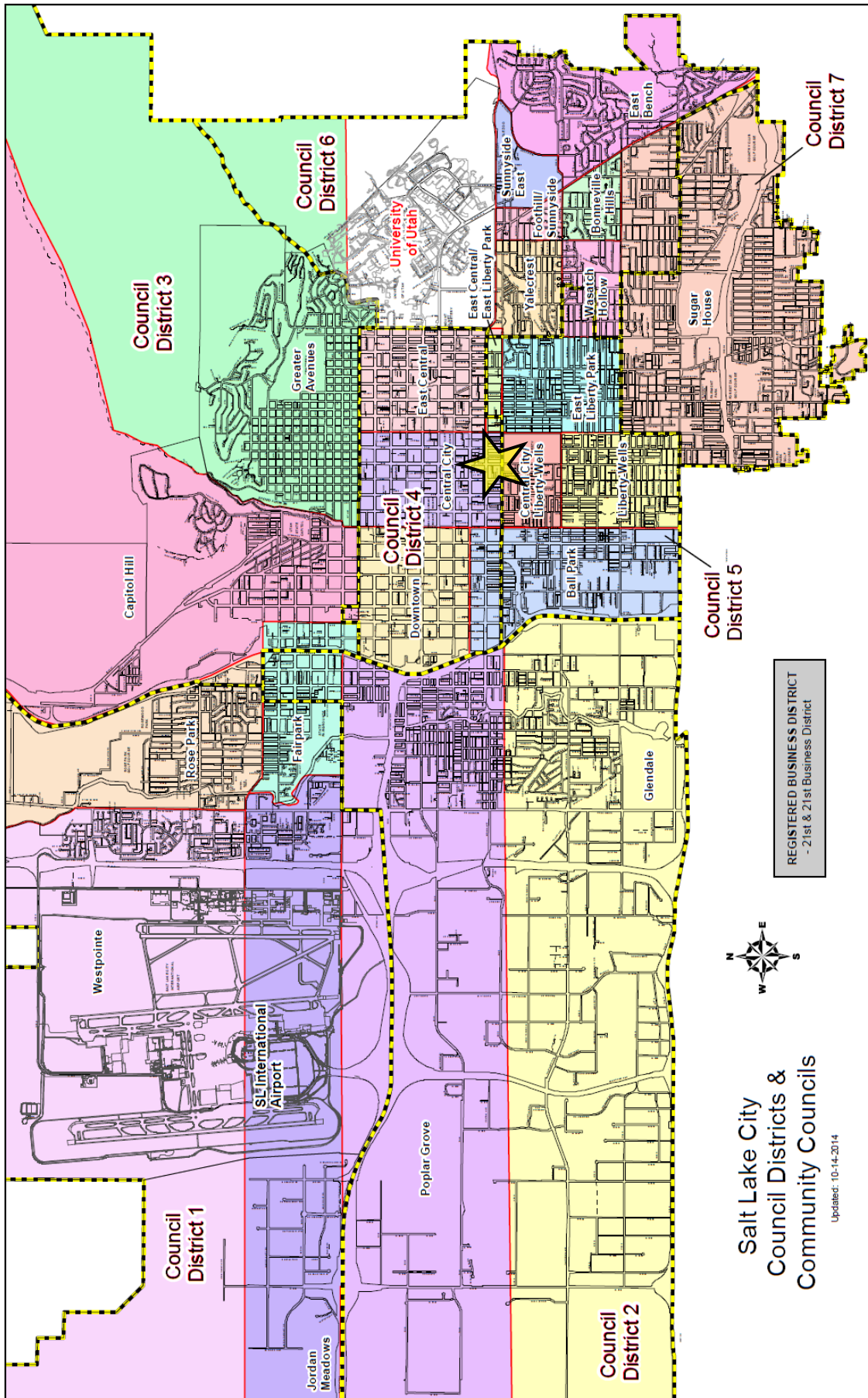


Fig. 1. Community Council & Council Districts Map. Note the star indicating the location of the Artesian Well Pocket Park (City and).

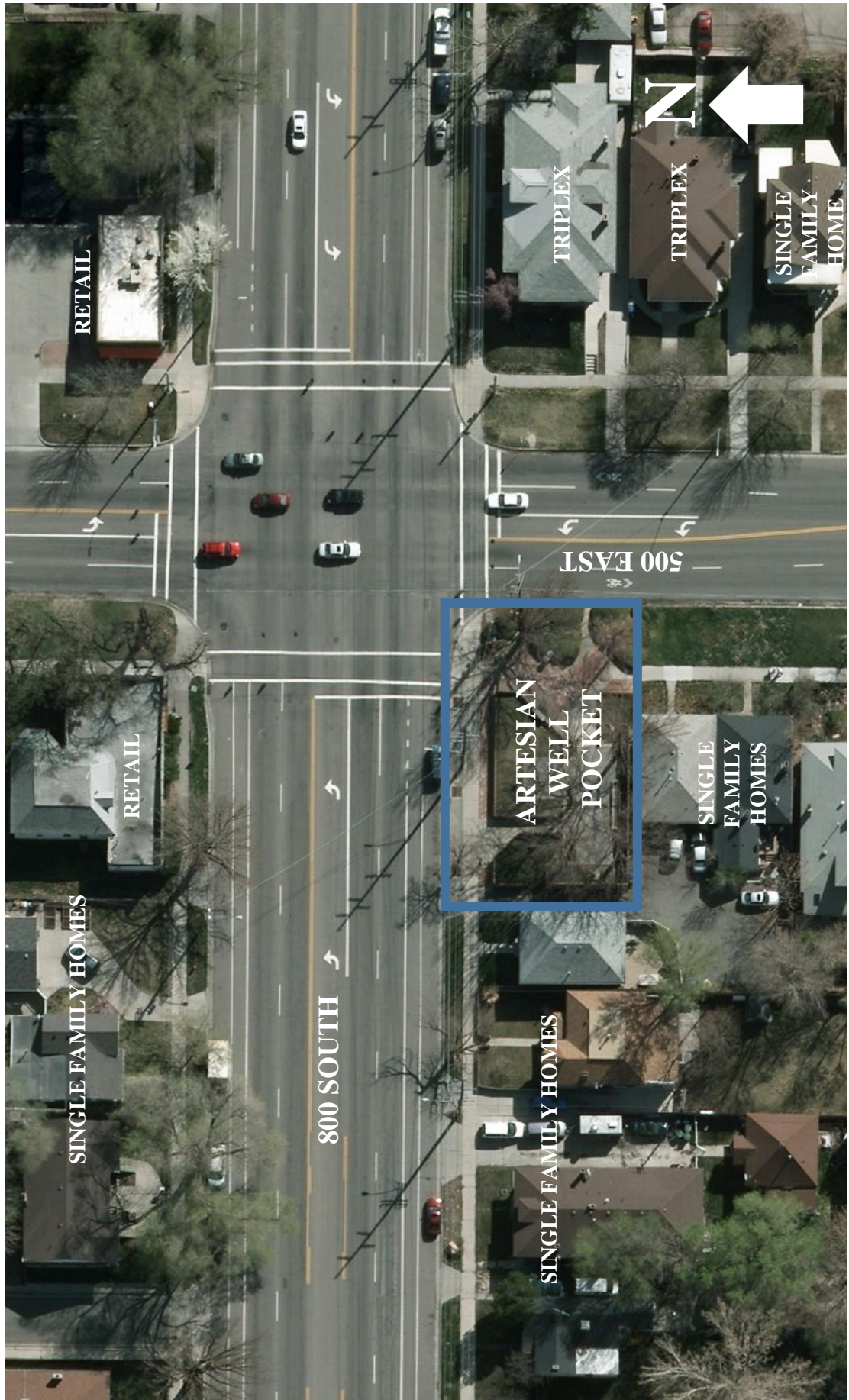


Fig. 2. Context Map (2012).





Fig. 3. Street view to the southeast looking into the park on 800 South. Note the brick retaining wall running the length of 800 South and continuing around the western perimeter and the varied brick and concrete walkway surfacing along the frontage of 800 South (Google).



Fig. 4. Decorative metal light fixture located west of the northwest entrance of the park along 800 South. Note the single family housing to the west, the brick wall and pavement detail (Siri Vlastic, 9/1/15).



Fig. 5. A brick retaining wall marks the 800 South entrance frontage. Photograph taken facing east. Note the grey and red brick and exposed aggregate concrete pavement detail (Siri Vlastic, 9/1/15).



Fig. 6. View to the south of the northwest entrance into the park on 800 South (Siri Vlastic, 9/1/15).



Fig. 7. View to the north from inside the northwest entrance of the park facing 800 South. Note the semi-enclosed grassed area to the left and to the far north across the street an abandoned retail store (Siri Vlastic, 9/1/15).



Fig. 8. View to the northwest from inside the northwest entrance of the park facing toward 800 South. Note the single family housing across the street (Siri Vlastic, 9/1/15).



Fig. 9. View to the northeast from inside the northwest entrance of the park facing toward 800 South. Note the brick wall used for retaining and to the far northeast across the street a brick retail shop (Siri Vlastic, 9/1/15).



Fig. 10. Two-tiered concrete fountain repurposed into a planter located along the southern perimeter of the park in the southwest corner. Note the circa 1911 single family brick home in the background (Sanborn 1911) (Siri Vlastic, 9/1/15).



Fig 11. Two-tiered concrete planter filled with annuals in 2009 (Salt 1).



Fig. 12. South side of the brick wall and two-tiered planter along the southern perimeter of the park. Note the piping and pump casing (JoEllen Gandy, 10/23/15)



Fig. 13. View to the southeast of the courtyard and two-tiered concrete planter. Note the decorative metal light fixture, brick mini planter box and Oak tree (*Quercus sp.*) to the far left (Siri Vlastic, 9/1/15).



Fig. 14. View to the southwest of the park. Note the Oak tree (*Quercus sp.*), decorative metal acorn light fixture and abstract sculpture to the right (Siri Vlastic, 9/1/15).



Fig. 15. A raised seating area marks the east edge of the northwest entrance of the park and west edge of the artesian well. Photograph taken facing northeast. Note the change in concrete to rectangle pavers outlined with concrete trim, decorative metal light fixture and the rear side of the artesian well to the right (Siri Vlastic, 9/1/15).



Fig. 16. Decorative wooden and metal bench marks the west edge the raised seating area (Siri Vlastic, 9/1/15).



Fig. 17. Decorative metal light fixture, brick retaining wall and rear side of the artesian well mark the east edge of the seating area (Siri Vlastic, 9/1/15).



Fig. 18. View to the east of rear side of the artesian well (Siri Vlastic, 9/1/15).





Fig. 19. View to the east from inside the park, south of the seating area, facing toward the east entrance into the park along 500 East (Siri Vlastic, 9/1/15).



Fig. 20. View to the west from inside the park near the east entrance of the park along 500 East. Note the change in pavers between the upper and lower level, and the light fixtures, Oak trees (*Quercus sp.*) and sculpture to the far rear (Siri Vlastic, 9/1/15).



Fig. 21. View to the south from inside the south entrance of the park along 500 East's sidewalk (Siri Vlastic, 9/1/15).



Fig. 22. View to the east from inside the east entrance of the park facing toward 500 East (Siri Vlastic, 9/1/15).



Fig. 23. View to the west of the east entrance into the park from 500 East. Note *Pyracantha* shrubs (*Pyracantha* sp.) flanked on each side of the walkway (Google).



Fig. 24. *Pyracantha* shrubs (*Pyracantha* sp.) border the eastern edge of the park. Note the Linden tree (*Tilia* sp.) to the right (Siri Vlastic, 9/1/15).



Fig. 25. Four concrete rectangular blocks nestled among *Pyracantha* shrubs (*Pyracantha* sp.) (JoEllen Grandy, 10/23/15).

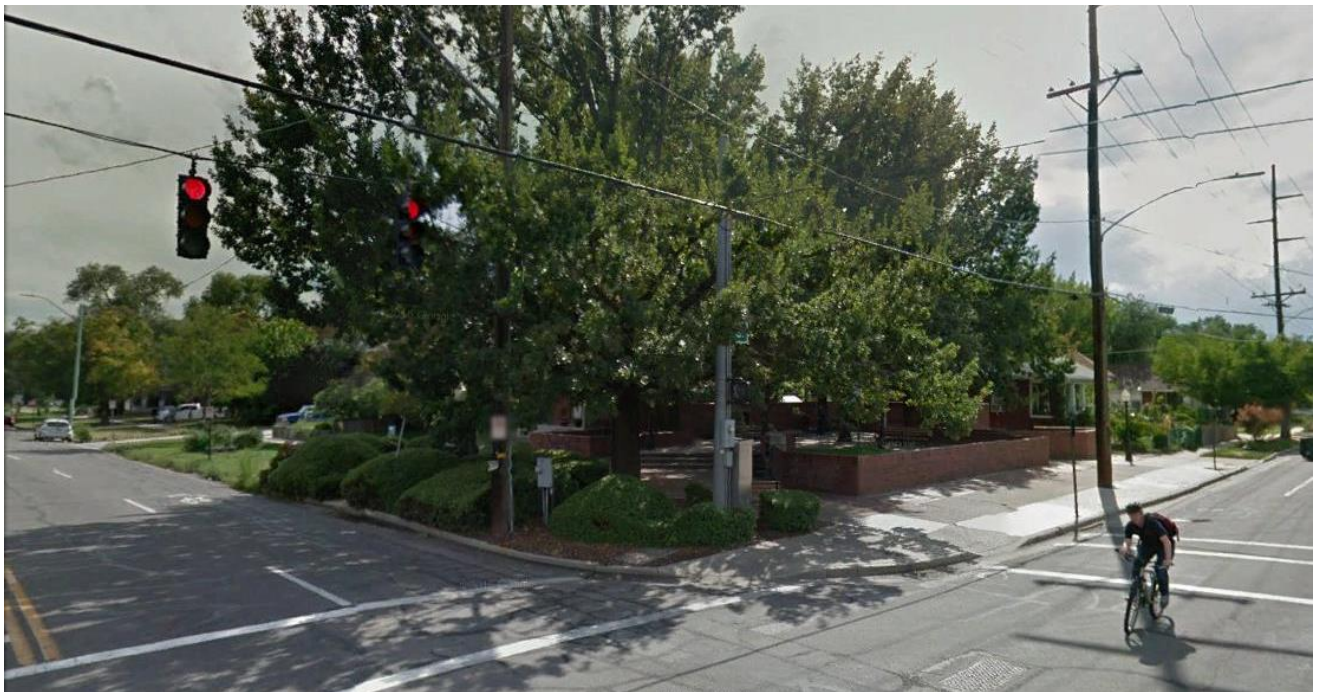


Fig. 26. Street view to the southwest of the main entrance into the park on the corner of 500 East and 800 South (Google)



Fig. 27. View to the southwest inside the main entrance into the park on the corner of 500 East and 800 South. Note the artesian well along the brick wall (Siri Vlastic, 9/1/15).



Fig. 28. View to the northwest of the artesian well and mini courtyard. Note the change in surfacing from concrete to brick pavers (Siri Vlastic, 9/1/15).



Fig. 29. View to the northwest of the artesian well (Siri Vlastic, 9/1/15).



Fig. 30. View to the southwest of the artesian well (Siri Vlastic, 9/1/15).



Fig. 31. View to the northeast inside the main entrance into the park on the corner of 500 East and 800 South. Note the decorative wooden and metal bench (Siri Vlastic, 9/1/15).



Fig. 32. View to the southwest inside the main entrance into the park on the corner of 500 East and 800 South. Note the rectangular concrete drinking fountain to the left near the garbage dispenser (Siri Vlastic, 9/1/15).



Fig. 33. Rectangular concrete drinking fountain in 2009 to the left; in 2015 to the right (Salt 7; JoEllen Grandy, 10/23/15).



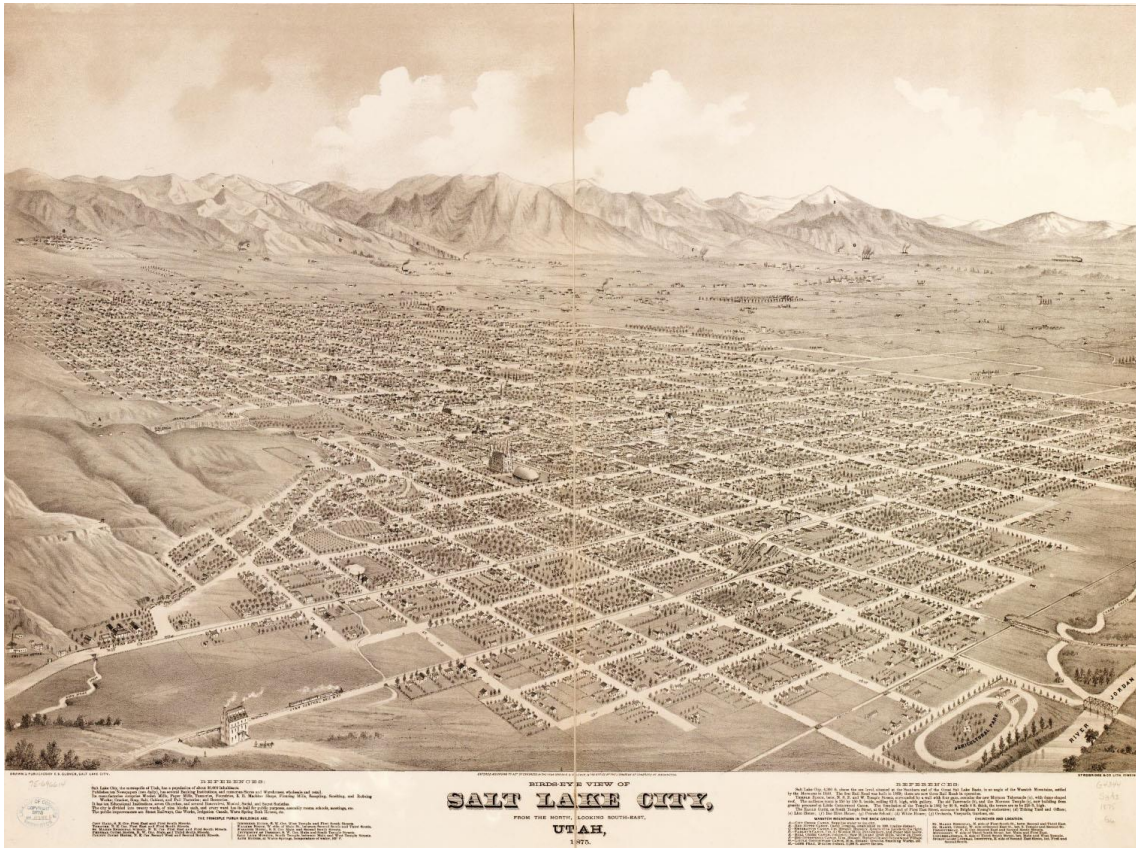


Fig. 34. An 1875 southeastern bird's eye view of Salt Lake City. Note the ten-acre block grid pattern patterned after the "Plat of the City of Zion". Map courtesy of Library of Congress, Geography and Map Division (Glover).

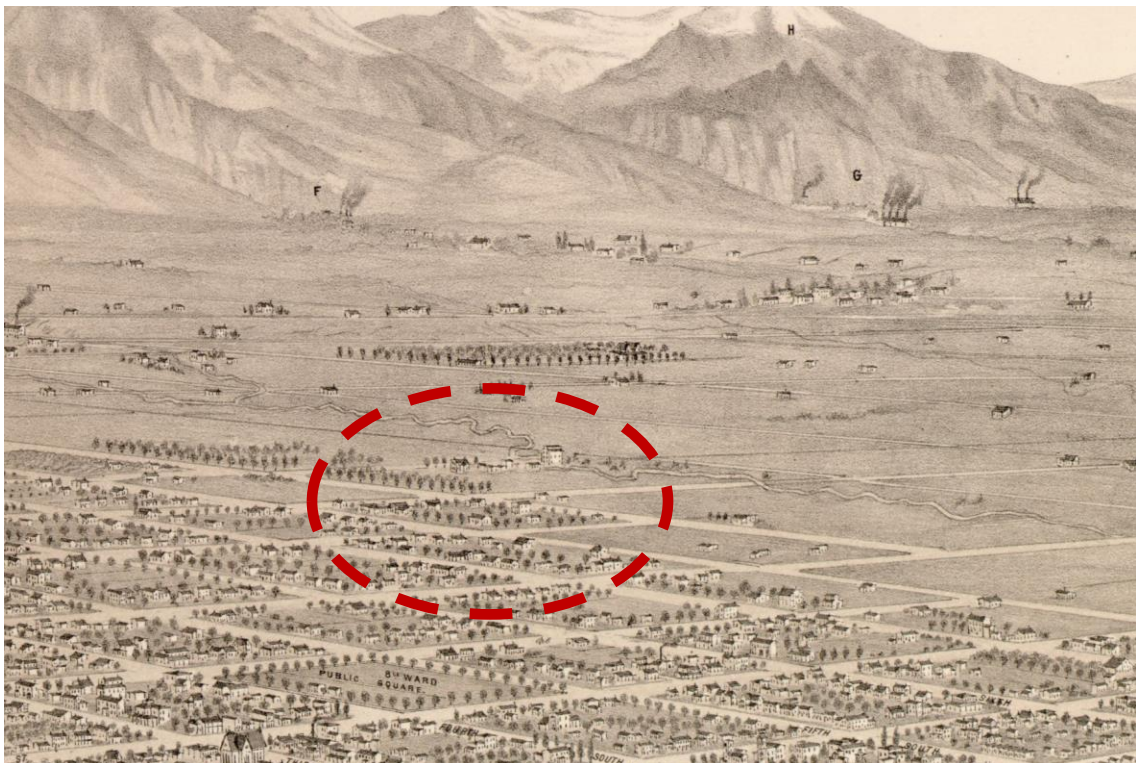


Fig. 35. An 1875 southeastern close-up bird's eye view of the City block where the Artesian Well Pocket Park would eventually be established. Map courtesy of Library of Congress, Geography and Map Division (Glover).

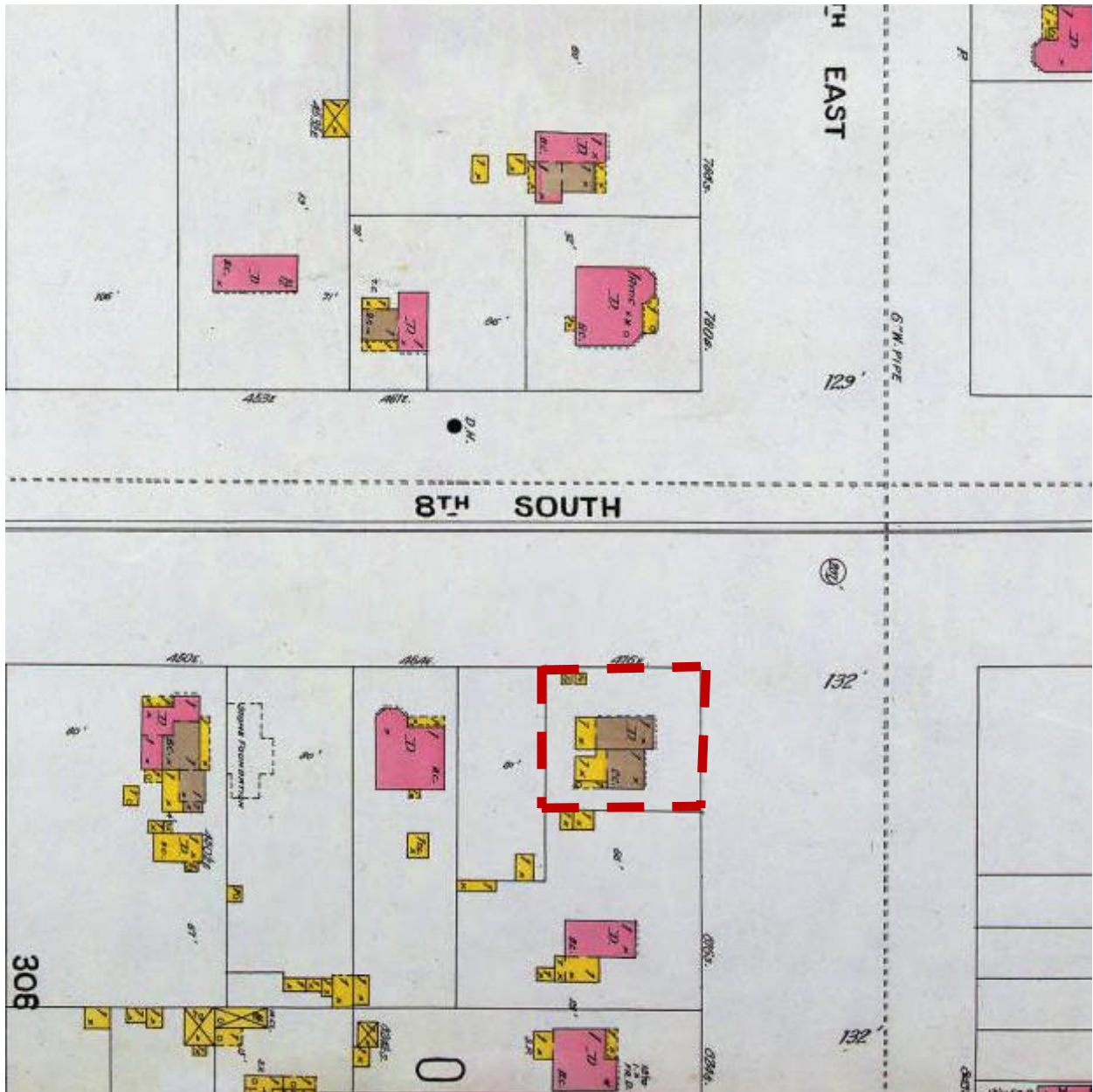


Fig. 36. 1898 Sanborn map illustrates the location of an adobe/fireproof and framed dwelling and detached outbuildings (Sanborn, 1898).



Fig. 37. 1911 Sanborn map illustrates the absence of the adobe/fireproof and framed dwelling and detached outbuildings, lot line adjustment, and the addition of two brick dwellings with framed porches. Note the southwest corner of 500 East 800 South is empty (Sanborn, 1911).



Fig. 38. 1950 Sanborn map illustrates continuation of two brick dwellings with a slight change in framed porches (Sanborn, 1950).

Fig. 39. See attached map of 1979 original plans for the Artesian Well Pocket Park (City).

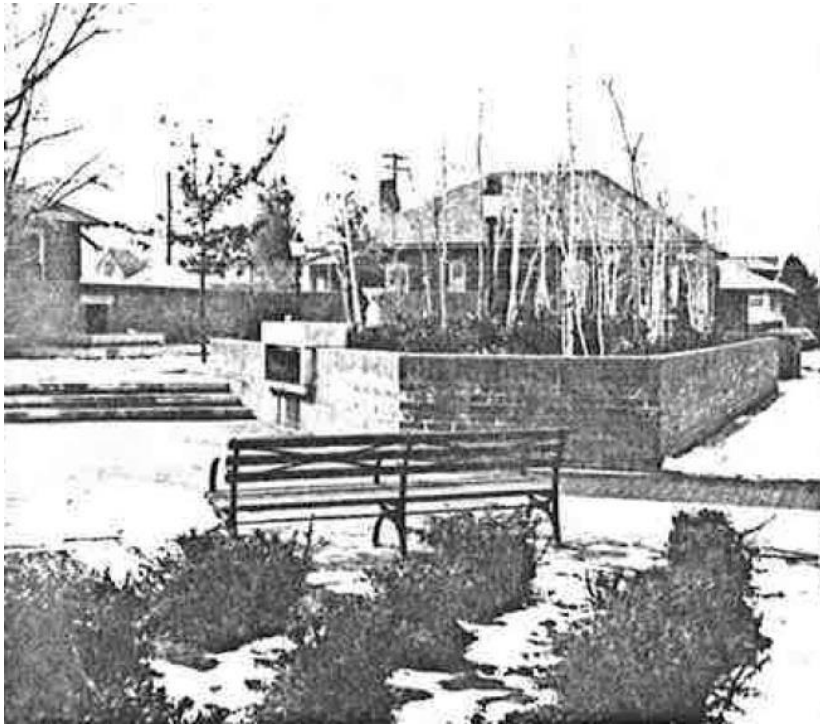


Fig. 40. Southwest view at the main entrance into the park on the corner of 500 East and 800 South in 1980. Note the large decorative wooden and metal bench and planting of Quaking Aspen trees (*Populus tremuloides*) in the raised seating area (802).



Fig. 41. Southwest view inside the main entrance into the park on the corner of 500 East and 800 South in 2009. Note the decorative wooden and metal bench to the rear east of the two-tiered planter (Salt 6).

Fig. 42. See attached map of 2015 existing conditions of the Artesian Well Pocket Park.

# KEY

<p><b>TILE 1ST BRICK 1ST</b> PROBABLY 1ST</p> <p><b>ADDBE</b></p> <p><b>HEIGHT OF BUILDING IN FEET FROM GROUND TO ROOF LINE</b></p> <p><b>(C. BR.)</b></p> <p><b>(C. B.)</b></p> <p><b>(CONC.)</b></p> <p><b>(TILE)</b></p> <p><b>NUMBER OF STORIES</b></p> <p><b>TWO STORIES AND OVER COMPOSITION ROOF</b></p> <p><b>SINGLE ROOF</b></p> <p><b>(VEND)</b></p> <p><b>BRICK 1ST</b></p> <p><b>FRAME, BRICK LINED</b></p> <p><b>F=FLAT S=STORE</b></p> <p><b>D=DWELLING</b></p> <p><b>A in B AUTO IN BENT</b></p> <p><b>LOFT</b></p> <p><b>(ASB. CL.)</b></p> <p><b>NON-COMBUSTIBLE ROOF COVERING OF METAL, SLATE, TILE OR ASBESTOS SHINGLES</b></p> <p><b>SKYLIGHT LIGHTING TOP STORY ONLY</b></p> <p><b>3 SKYLIGHT LIGHTING THREE STORIES</b></p> <p><b>WG WIRE GLASS SKYLIGHT</b></p> <p><b>FIRE WALL 6 INCHES ABOVE ROOF</b></p> <p><b>WATER TANK</b></p> <p><b>BRICK TIE</b></p> <p><b>A</b></p> <p><b>(C. B.)</b></p> <p><b>(C. B. &amp; BR.)</b></p> <p><b>(C. B. &amp; BR. CONSTN)</b></p> <p><b>(C. B. &amp; BR. CONSTN) (BR FACED)</b></p> <p><b>(C. B. &amp; BR. CONSTN)</b></p>	<p>Fire proof construction. (OR FIRE RESISTIVE CONSTN)</p> <p>Adobe building.</p> <p>Stone building.</p> <p>Concrete, lime, cinder or cement brick.</p> <p>Hollow concrete or cement block constn.</p> <p>Concrete or reinforced concrete constn.</p> <p>Tile building.</p> <p>Brick building with frame cornice.</p> <p>" " " stone front.</p> <p>" " " frame side. (DIVIDED BY FRAME PARTITION)</p> <p>Brick veneered building.</p> <p>" " and frame building.</p> <p>Frame building, brick lined.</p> <p>" " metal clad.</p> <p>Frame building.</p> <p>Iron building.</p> <p>Tenant building occupied by various manufacturing or occupancies.</p> <p>Frame building covered with asbestos.</p> <p>Brick building with brick or metal cornice.</p> <p>Fire wall 6 inches above roof.</p> <p>" " " 12 " " "</p> <p>" " " 18 " " "</p> <p>" " " 36 " " "</p> <p>Figures 8, 12, 16 indicate thickness of wall in inches.</p> <p>Wall without opening and size in inches.</p> <p>Wall with openings on floors as designated.</p> <p>Opening with single iron or tin clad door.</p> <p>" " double iron " " " doors.</p> <p>" " standard fire doors.</p> <p>Openings with wired glass doors.</p> <p>Drive or passage way.</p> <p>Stable.</p> <p>Auto. House or private garage.</p> <p>Solid brick with interior walls of C. B. or C. B. and brick mixed.</p> <p>Mixed construction of C. B. and brick with one wall of solid brick.</p> <p>Mixed construction of C. B. and brick with one wall faced with 4" brick.</p> <p>Mixed construction of C. B. and brick throughout.</p>	<p><b>MANSARD ROOF</b> DOTS REPRESENT OPENINGS. STEMS INDICATE STORIES, COUNTING FROM LEFT TO RIGHT, LOOKING TOWARD BUILDING.</p> <p>Window opening in first story.</p> <p>Window openings in second and third stories.</p> <p>Window openings in second and fourth stories.</p> <p>Windows with wired glass.</p> <p>Windows with iron or tin clad shutters.</p> <p>Window openings tenth to twenty-second stories.</p> <p><b>(E)</b> Open elevator.</p> <p><b>(FE)</b> Frame enclosed elevator.</p> <p><b>(ET)</b> " " " with traps.</p> <p><b>(ESC)</b> " " " " self closing traps.</p> <p><b>(CBET)</b> Concrete block enclosed elevator with traps.</p> <p><b>(TESC)</b> Tile enclosed elevator with self closing traps.</p> <p><b>(BE)</b> Brick enclosed elev. with wired glass door.</p> <p><b>5</b> Block number.</p> <p><b>UP B</b> Vertical pipe or stand pipe.</p> <p><b>AFA</b> Automatic fire alarm.</p> <p><b>IEP</b> Independent electric plant.</p> <p><b>(AS)</b> Automatic sprinklers.</p> <p><b>(ABS)</b> Automatic chemical sprinklers.</p> <p><b>(S)</b> Automatic sprinklers in part of building only. (NOTE UNDER SYMBOL INDICATES PROTECTED PORTION OF BUILDING)</p> <p><b>NS</b> Not sprinklered.</p> <p><b>Outside vertical pipe on fire escape.</b></p> <p><b>FA</b> Fire alarm box.</p> <p><b>Single hydrant.</b></p> <p><b>D.H.</b> Double " "</p> <p><b>T.H.</b> Triple " "</p> <p><b>Q.H.</b> Quadruple hydrant of the "High Pressure Fire Service".</p> <p><b>(FA)</b> Fire alarm box of the "High Pressure Fire Service".</p> <p><b>H.P.F.S.</b></p> <p><b>20" W. PIPE (H.P.F.S.)</b> Water pipes of the "High Pressure Fire Service" and hydrants of the "High Pressure Fire Service" as shown on key map.</p> <p><b>6" W. PIPE</b> Water pipes and size in inches.</p> <p><b>6" W. PIPE (PRIVATE)</b> Water pipes of private supply.</p> <p><b>2</b> House numbers shown nearest to buildings are official or actually up on buildings.</p> <p><b>D</b> Old house numbers shown furthest from buildings.</p> <p><b>(15)</b> Ground elevation.</p> <p><b>UP B</b> Vertical steam boiler.</p> <p><b>GO</b> Gasoline tank.</p> <p><b>(O. U)</b> Open under.</p> <p><b>Siamese fire dept. connection</b></p> <p><b>Single fire dept. connection</b></p> <p><b>24</b> Reference to adjoining page.</p> <p><b>+</b> Fire engine house, as shown on key map.</p> <p><b>●</b> Fire pump.</p> <p><b>(36)</b> Under page number refers to corresponding page of previous edition.</p>
---	---	--

## CODING OF STRUCTURAL UNITS FOR FIREPROOF AND NON-COMBUSTIBLE BUILDINGS

FRAMING CODE STRUCTURAL UNIT	FLOORS CODE STRUCTURAL UNIT	ROOF CODE STRUCTURAL UNIT								
<p><b>A.</b> Reinforced Concrete Frame.</p> <p><b>B.</b> Reinforced Concrete Joists, Columns, Beams, Trusses, Arches, Masonry Piers.</p> <p><b>C.</b> Protected Steel Frame.</p> <p><b>D.</b> Individually Protected Steel Joists, Columns, Beams, Trusses, Arches.</p> <p><b>E.</b> Indirectly Protected Steel Frame.</p> <p><b>F.</b> Indirectly Protected Steel Joists, Columns, Beams, Trusses, Arches.</p> <p><b>G.</b> Unprotected Steel Frame.</p> <p><b>H.</b> Unprotected Steel Joists, Columns, Beams, Trusses, Arches.</p> <p><b>O.</b> Masonry Bearing Walls.</p>	<p><b>1.</b> Reinforced Concrete, Reinforced Concrete with Masonry Units, Pre-cast Concrete or Gypsum Slabs or Planks.</p> <p><b>2.</b> Concrete on Metal Lath, Incombustible Form Boards, Paper-backed Wire Fabric, Steel Deck, and Cellular, Ribbed or Corrugated Steel Units.</p> <p><b>3.</b> Open Steel Deck or Grating.</p>	<p><b>a.</b> Reinforced Concrete, Reinforced Concrete with Masonry Units, Reinforced Gypsum Concrete, Pre-cast Concrete or Gypsum Slabs or Planks.</p> <p><b>b.</b> Concrete or Gypsum on Metal Lath, Incombustible Form Boards, Paper-backed Wire Fabric, Steel Deck, and Cellular, Ribbed or Corrugated Steel Units.</p> <p><b>c.</b> Incombustible Composition Boards with or without Insulation, Masonry or Metal Tiles.</p> <p><b>d.</b> Steel Deck, Corrugated Metal or Asbestos Protected Metal with or without Insulation.</p>								
<p><small>LAND USE CODE APPLICABLE TO CHANGES DIAGRAMMED AFTER 1948</small></p> <table border="1" style="margin: auto; border-collapse: collapse;"> <tr> <td style="padding: 2px;"><b>R</b> RESIDENTIAL</td> <td style="padding: 2px;"><b>M</b> MANUFACTURING</td> </tr> <tr> <td style="padding: 2px;"><b>RT</b> RESIDENTIAL - TRANSIENT</td> <td style="padding: 2px;"><b>P</b> PUBLIC OR INSTITUTIONAL</td> </tr> <tr> <td style="padding: 2px;"><b>C</b> COMMERCIAL</td> <td style="padding: 2px;"><b>U</b> UTILITY</td> </tr> <tr> <td style="padding: 2px;"><b>W</b> WAREHOUSE</td> <td style="padding: 2px;"><b>T</b> TRANSPORTATION</td> </tr> </table> <p><small>NUMERICAL PREFIX INDICATES THE NUMBER OF ESTABLISHMENTS IN EACH CATEGORY</small></p>			<b>R</b> RESIDENTIAL	<b>M</b> MANUFACTURING	<b>RT</b> RESIDENTIAL - TRANSIENT	<b>P</b> PUBLIC OR INSTITUTIONAL	<b>C</b> COMMERCIAL	<b>U</b> UTILITY	<b>W</b> WAREHOUSE	<b>T</b> TRANSPORTATION
<b>R</b> RESIDENTIAL	<b>M</b> MANUFACTURING									
<b>RT</b> RESIDENTIAL - TRANSIENT	<b>P</b> PUBLIC OR INSTITUTIONAL									
<b>C</b> COMMERCIAL	<b>U</b> UTILITY									
<b>W</b> WAREHOUSE	<b>T</b> TRANSPORTATION									

<p>The coding for framing, floor and roof structural units as shown above is used in describing the construction of fire-resistive buildings. In addition, reports for fire-resistive buildings will show the date built and wall construction when other than brick.</p> <p>F P buildings have masonry floors and roof; concrete and/or directly or indirectly protected steel framing; and clay brick, stone or poured concrete walls.</p> <p>F P X buildings are F P buildings with inferior walls such as concrete block, cement brick, metal or glass panels, etc.</p> <p>N C buildings have unprotected steel framing and fire-resistive but non-masonry floors and roof.</p>	<p><b>FP-1962 (CONC.) A-1-B</b> A fire-resistive building built in 1962 with concrete walls and reinforced concrete frame, floors and roof.</p> <p><b>FPX-1962 (METAL PANELS) H-2-D</b> A fire-resistive building built in 1962 with metal panel walls, indirectly protected steel frame, concrete floors and roof on metal lath, noncombustible ceilings.</p> <p><b>NC-1962 (C. B.) H-2-D</b> A noncombustible building built in 1962 with concrete block walls; unprotected steel columns and beams; concrete floors on metal lath and steel deck roof.</p>
---	---

Color key to Sanborn maps (Color)

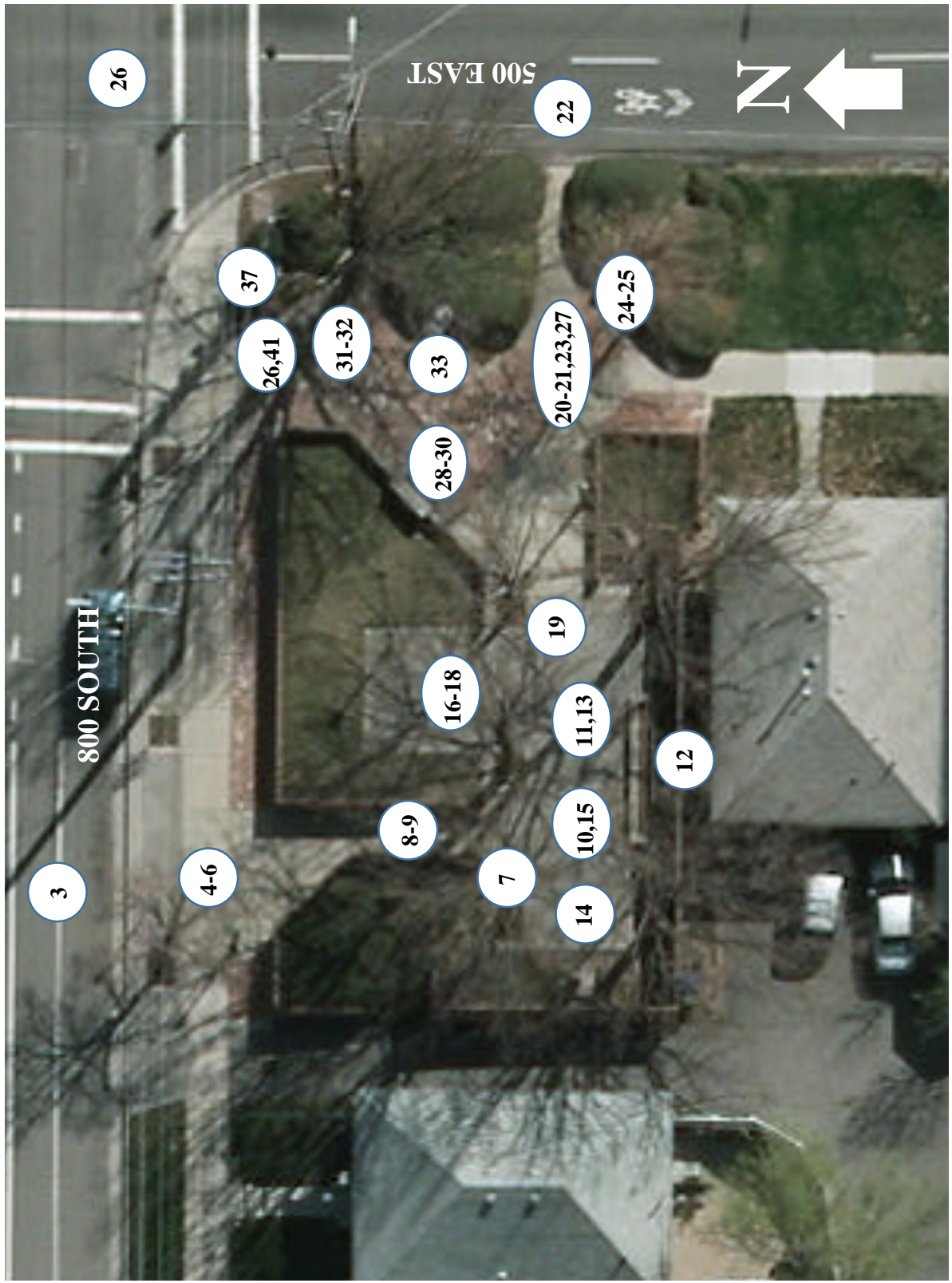
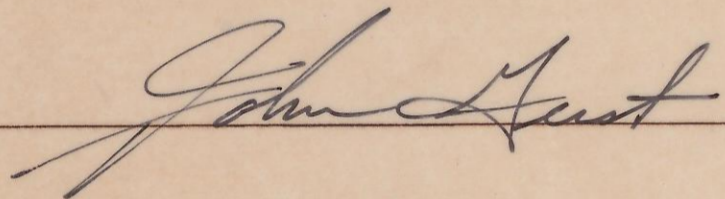


Photo Key (2012).

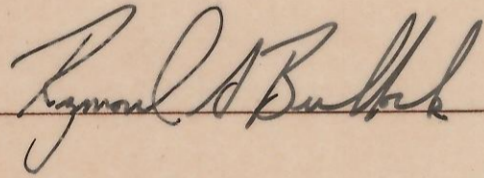
COMMUNITY DEVELOPMENT BLOCK GRANT PROJECT NO.

# CITY WELL MINI PARK

APPROVALS:



SUPERINTENDENT OF PARKS

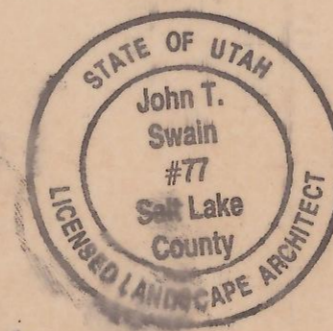


PUBLIC WORKS DIRECTOR

1	EXISTING FEATURES PLAN
2	FOOTING AND FOUNDATION PLAN
3	LAYOUT PLAN
4	GRADING PLAN
5	WALL DETAILS, STAIR DETAIL, BENCH DETAIL, TREE GRATE DETAIL
6	FOUNTAIN DETAIL, POOL SCHEMATIC, PUMP ENCLOSURE
7	ARTESIAN WELL DETAIL, DRINKING FOUNTAIN DET., BIKE RACK DETAIL.
8	ELECTRICAL PLAN, LIGHT FIXTURE DETAIL.
9	PLANTING PLAN, PLANTING DETAIL.
10	IRRIGATION PLAN, VALVE DET., EMITTER DET., VACUUM DETAIL.

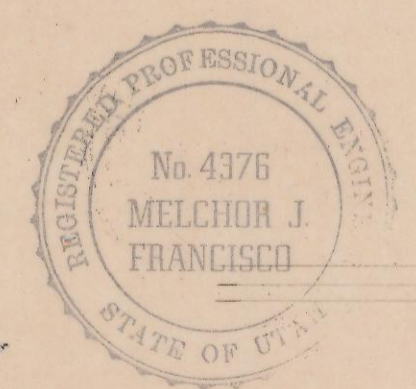
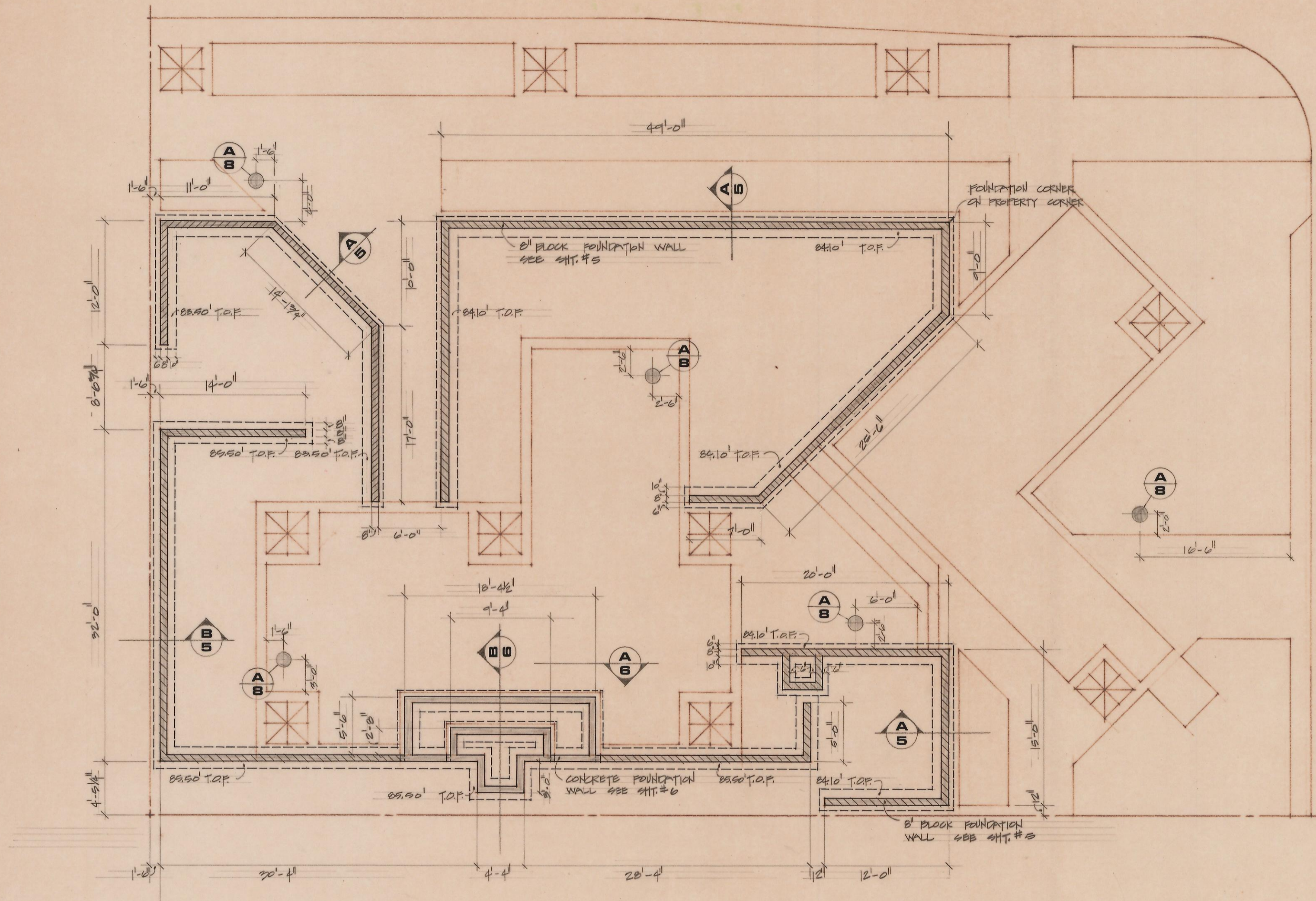


Your Salt Lake City  
Parks & Recreation









1/8" = 1'-0"  
 FOOTING & FOUNDATION PLAN

DRAWING No.

2 of 10

ACCT. DATE

# CITY WELL MINI PARK

500 EAST 800 SOUTH · SALT LAKE CITY, UTAH

Your Salt Lake City  
 Parks & Recreation



REVISIONS	
DESIGN	
DRAWN	



800 SOUTH

PLANTING BEDS

LINE INDICATES BACK OF EXIST. CURB

NOTE:  
FOR EXPANSION JOINT LAYOUT  
IN CONCRETE SEE SH. 4

800 EAST

SLAB PLATE  
10' SQUARE  
CONC. SMOOTH  
FIN. TYP.

6x8' x 1/4" STL.  
PLATE, CAST IN  
CONCRETE.  
(4) 3/16" x 1/2" V BOLT  
WELDED TO  
PLATE.  
FIN. GRADE

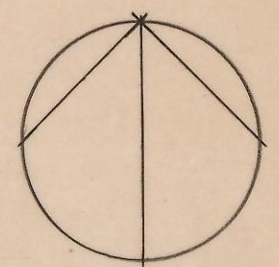
SCULPTURE PEDESTAL DET.  
SCALE 1/2" = 1'-0"

STATE OF UTAH  
John T.  
Swain  
#77  
Salt Lake  
County  
LICENSED LANDSCAPE ARCHITECT

REGISTERED PROFESSIONAL LANDSCAPE ARCHITECT  
No. 4376  
MELBORNE  
FRANCISCO  
STATE OF CALIFORNIA

1/8" = 1'-0"

LAYOUT PLAN



DRAWING No.

3 of 10

ACCT.  
DATE

# CITY WELL MINI PARK

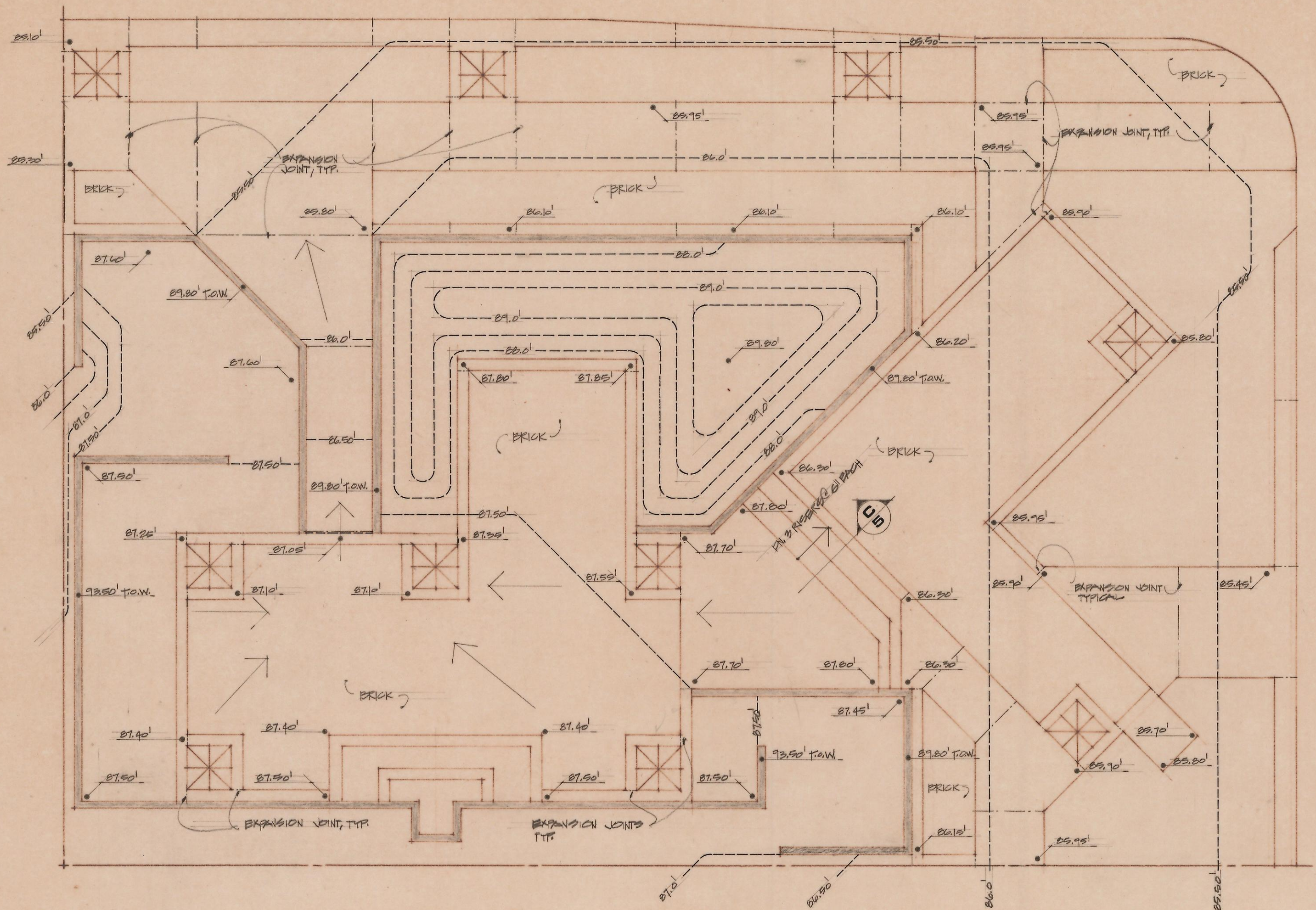
500 EAST 800 SOUTH · SALT LAKE CITY, UTAH

Your Salt Lake City  
Parks & Recreation

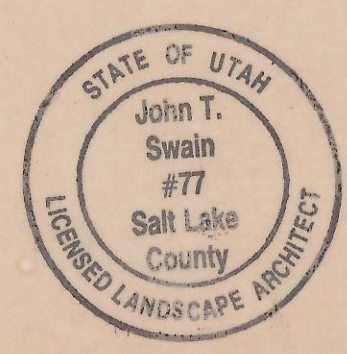
REVISIONS

\_\_\_\_\_  
DESIGN  
DRAWN

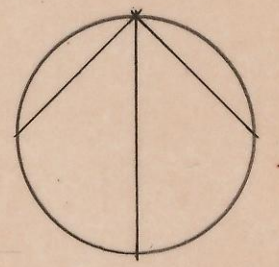




NOTE: — — — — — SYMBOL INDICATES EXPANSION JOINTS



1/8" = 1'-0"  
GRADING PLAN

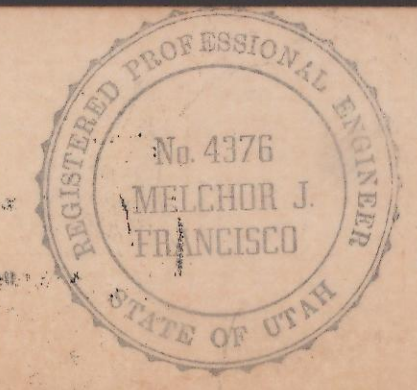


DRAWING No.  
**4 OF 10**  
ACCT.  
DATE

# CITY WELL MINI PARK

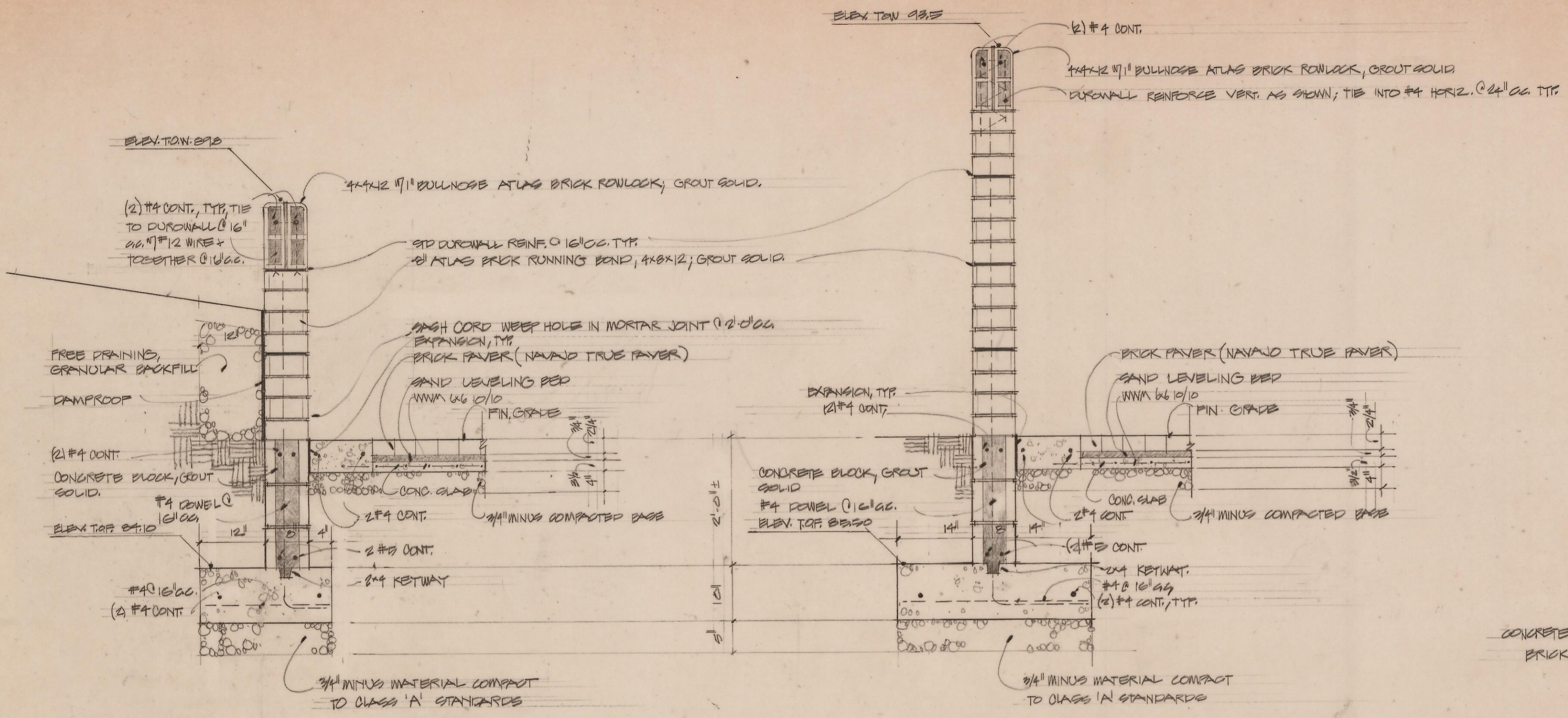
500 EAST 800 SOUTH · SALT LAKE CITY, UTAH

Your Salt Lake City  
Parks & Recreation



REVISIONS	
DESIGN	
DRAWN	



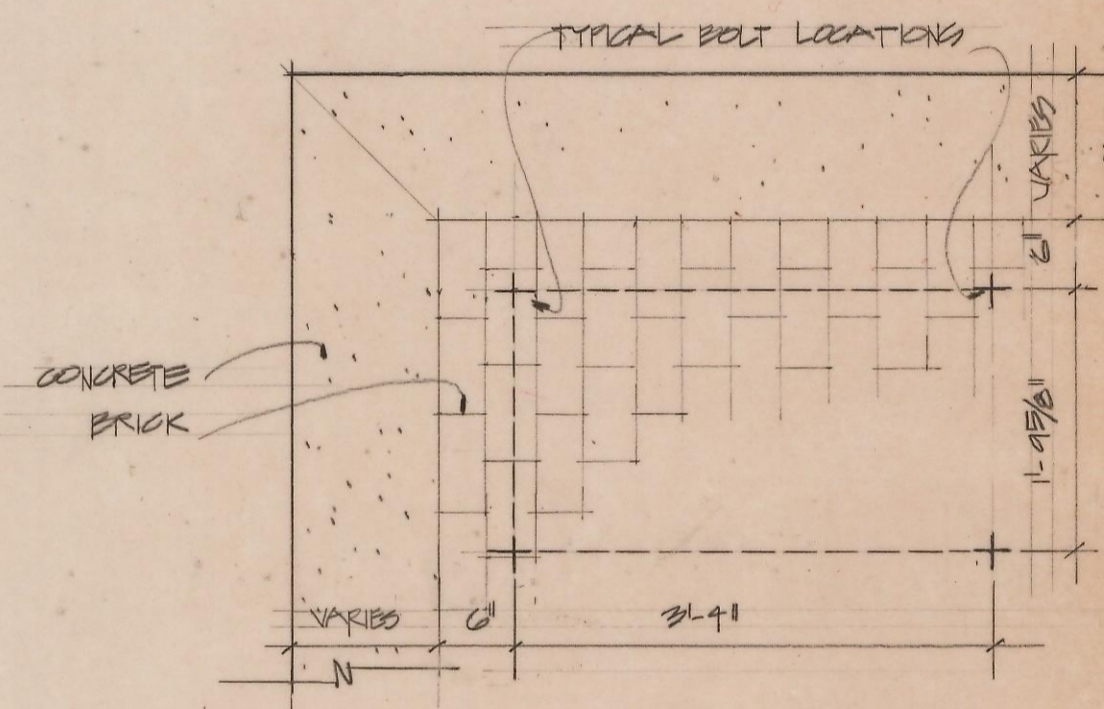


WALL DETAIL 3/4" = 1'-0"

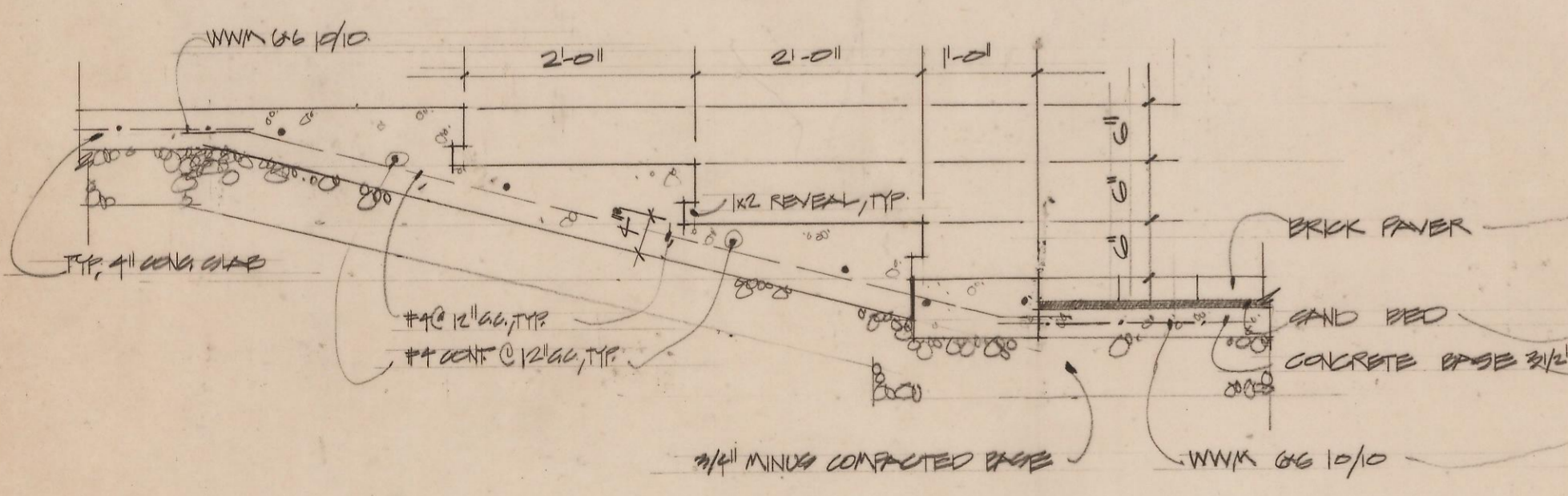
A

WALL DETAIL 3/4" = 1'-0"

B

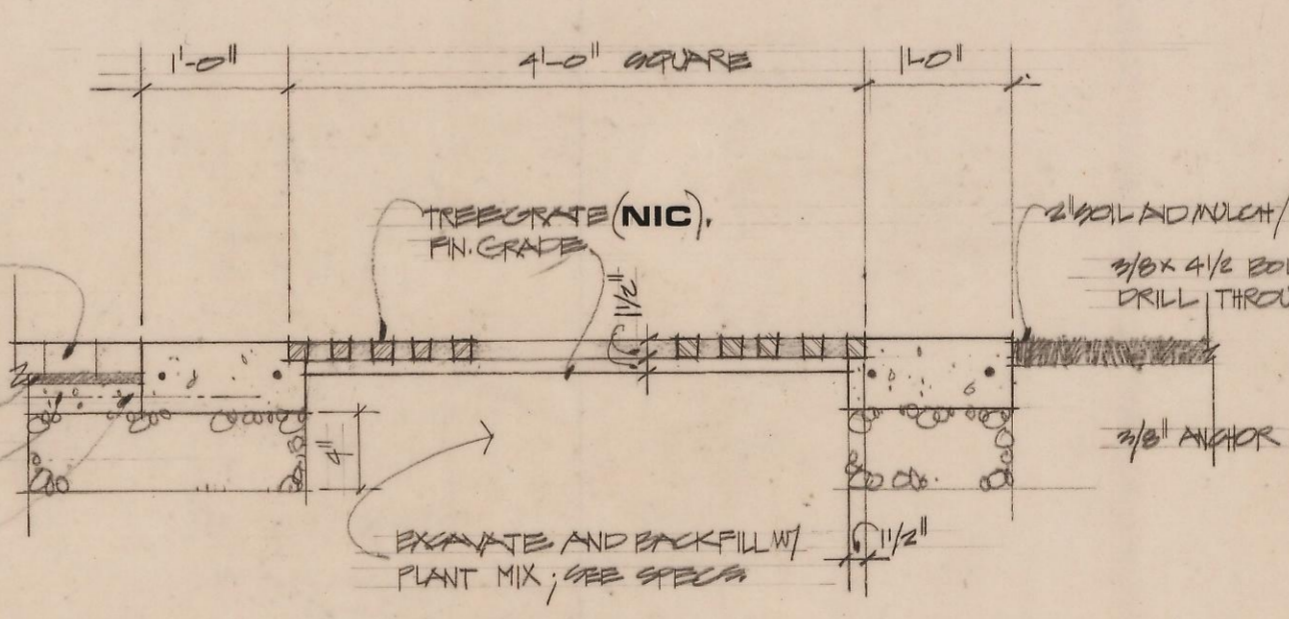


PLAN - TYPICAL BENCH LOCATION



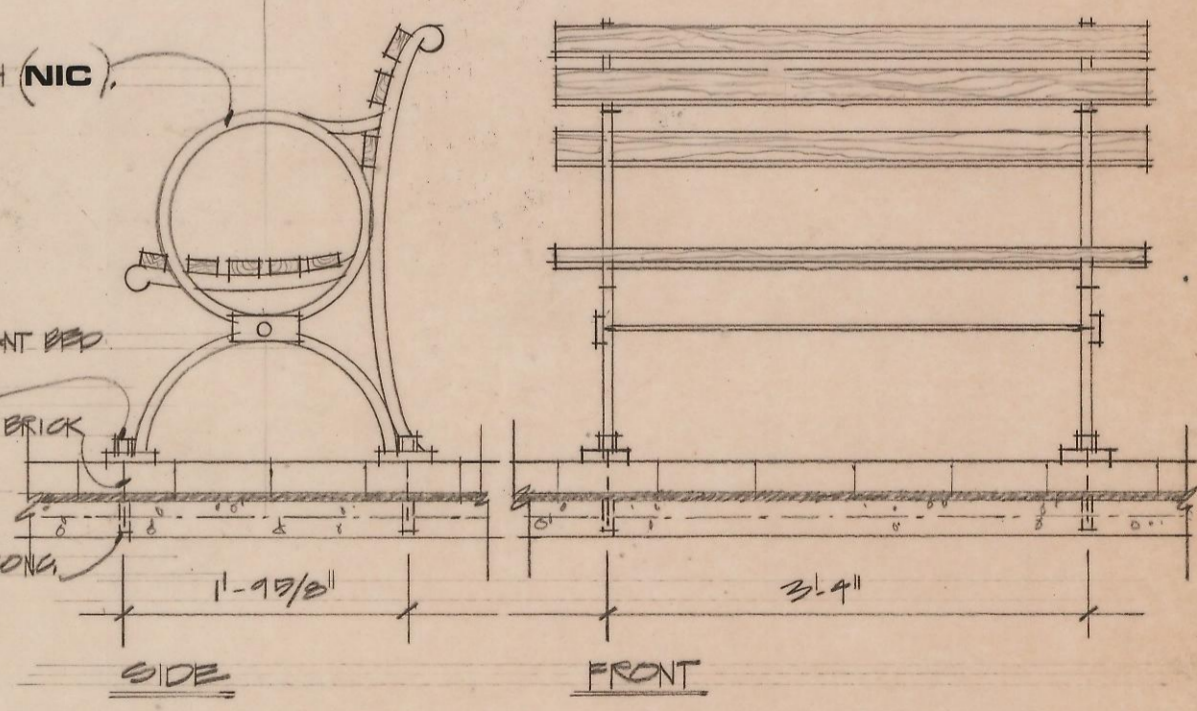
STAIR DETAIL 3/4" = 1'-0"

C



TREE GRATE DETAIL 3/4" = 1'-0"

D



BENCH DETAIL 3/4" = 1'-0"

E

DRAWING No.

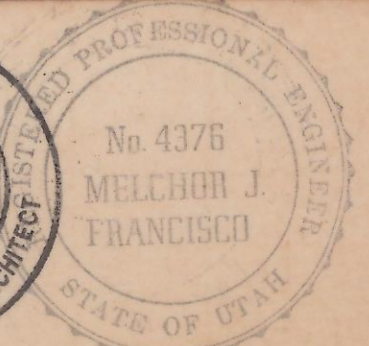
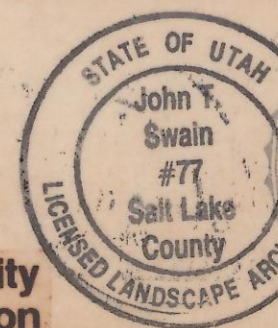
5 OF 10

ACCT. DATE

# CITY WELL MINI PARK

500 EAST 800 SOUTH · SALT LAKE CITY, UTAH

Your Salt Lake City Parks & Recreation



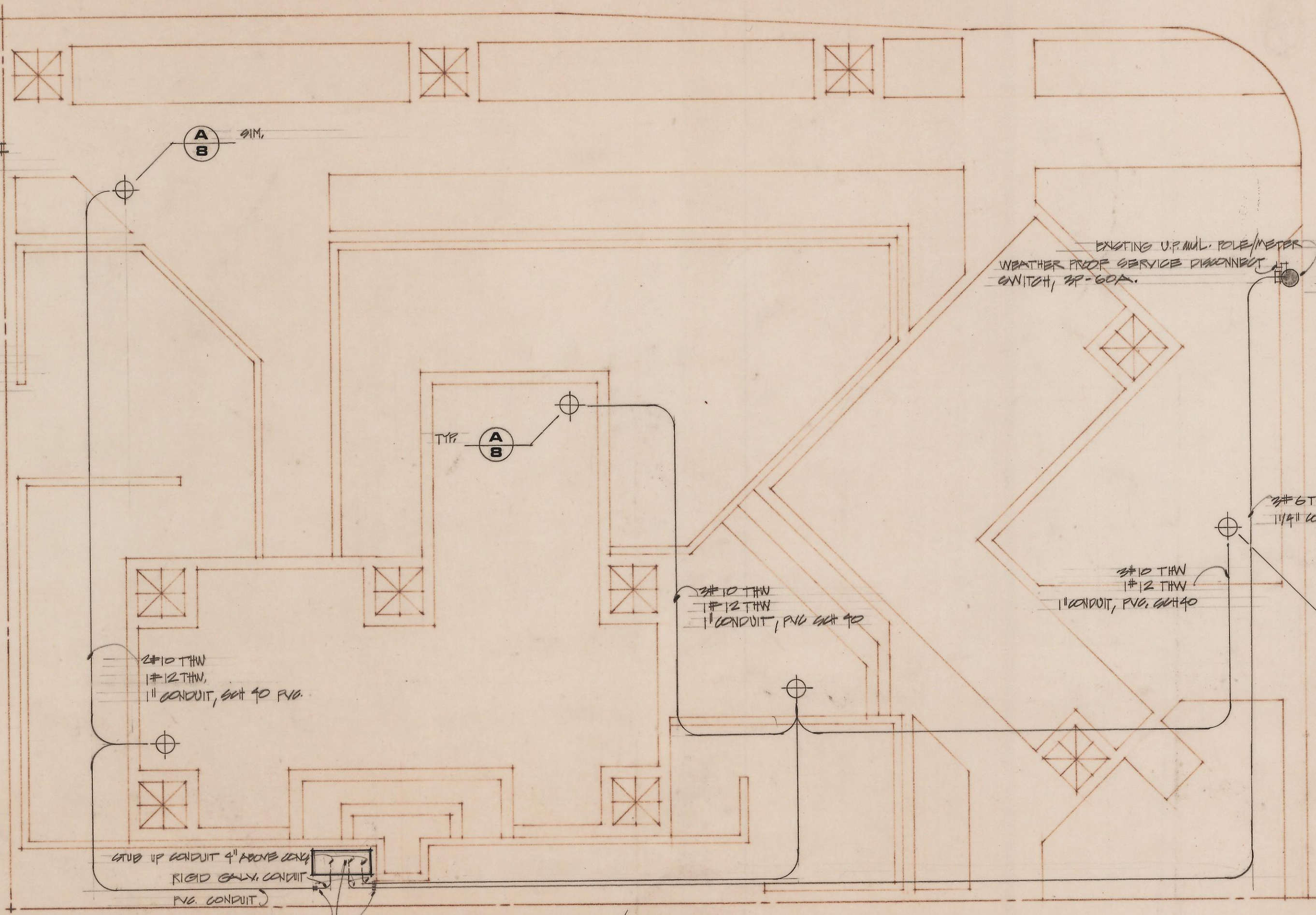
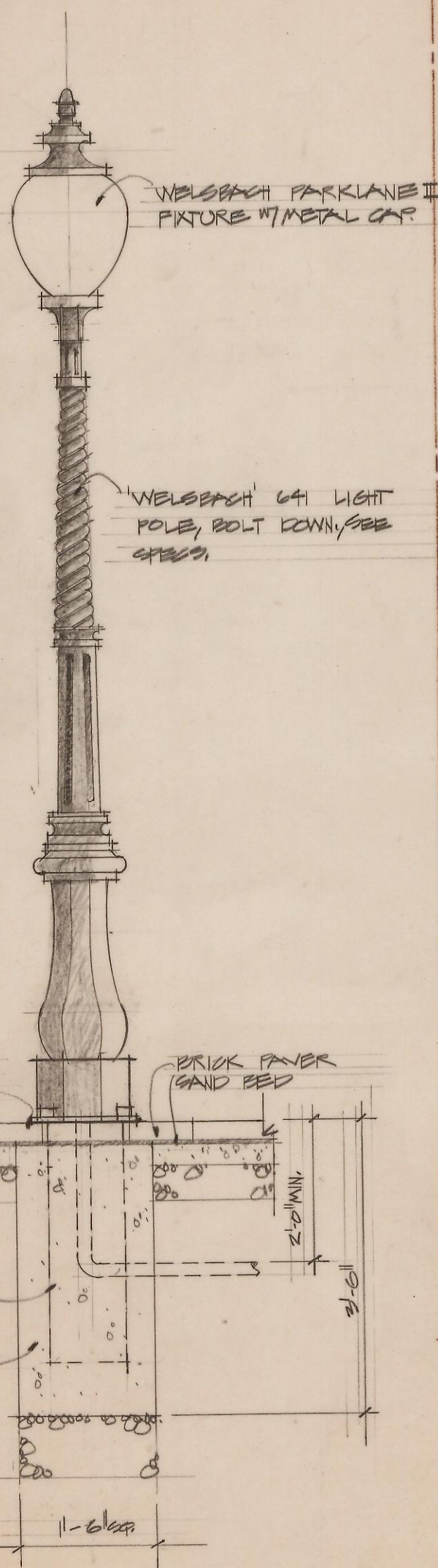
REVISIONS

DESIGN DRAWN

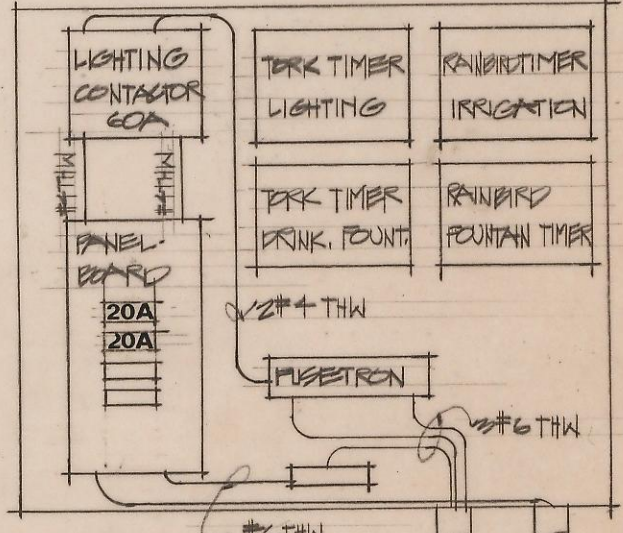




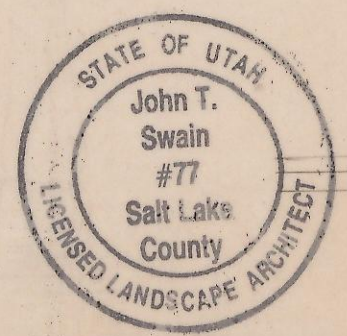




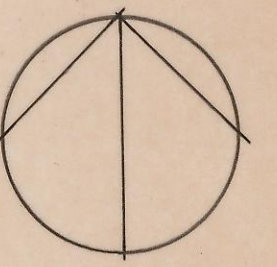
NOTE: ELECTRICAL CONTRACTOR TO FURNISH MATERIAL, CONDUIT, MOUNTING HARDWARE, CONDUCTORS, AND SERVICE DISCONNECT SWITCH W/ WEATHERPROOF BOX FOR UP. MUL. POLE. WORK ON POLE TO BE PERFORMED BY UP. MUL. PERSONNEL.



LIGHT DETAIL N.T.S. **A**



1/8" = 1'-0"  
ELECTRICAL PLAN



DRAWING No.

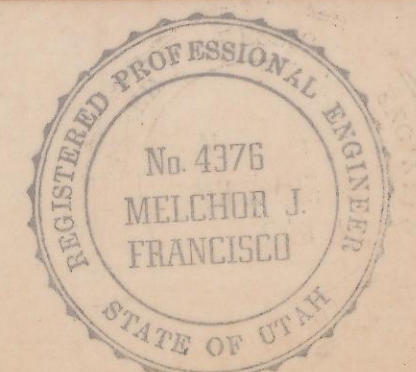
8 OF 10

ACCT. DATE

# CITY WELL MINI PARK

500 EAST 800 SOUTH · SALT LAKE CITY, UTAH

Your Salt Lake City  
Parks & Recreation

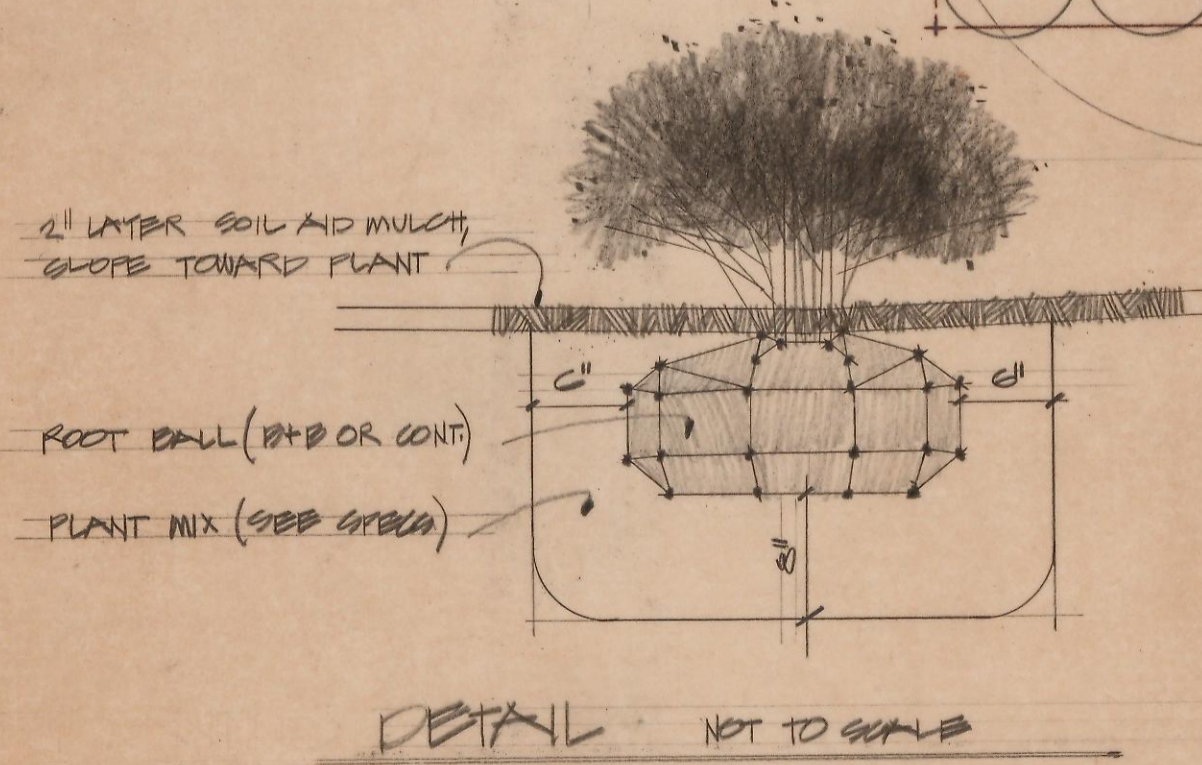
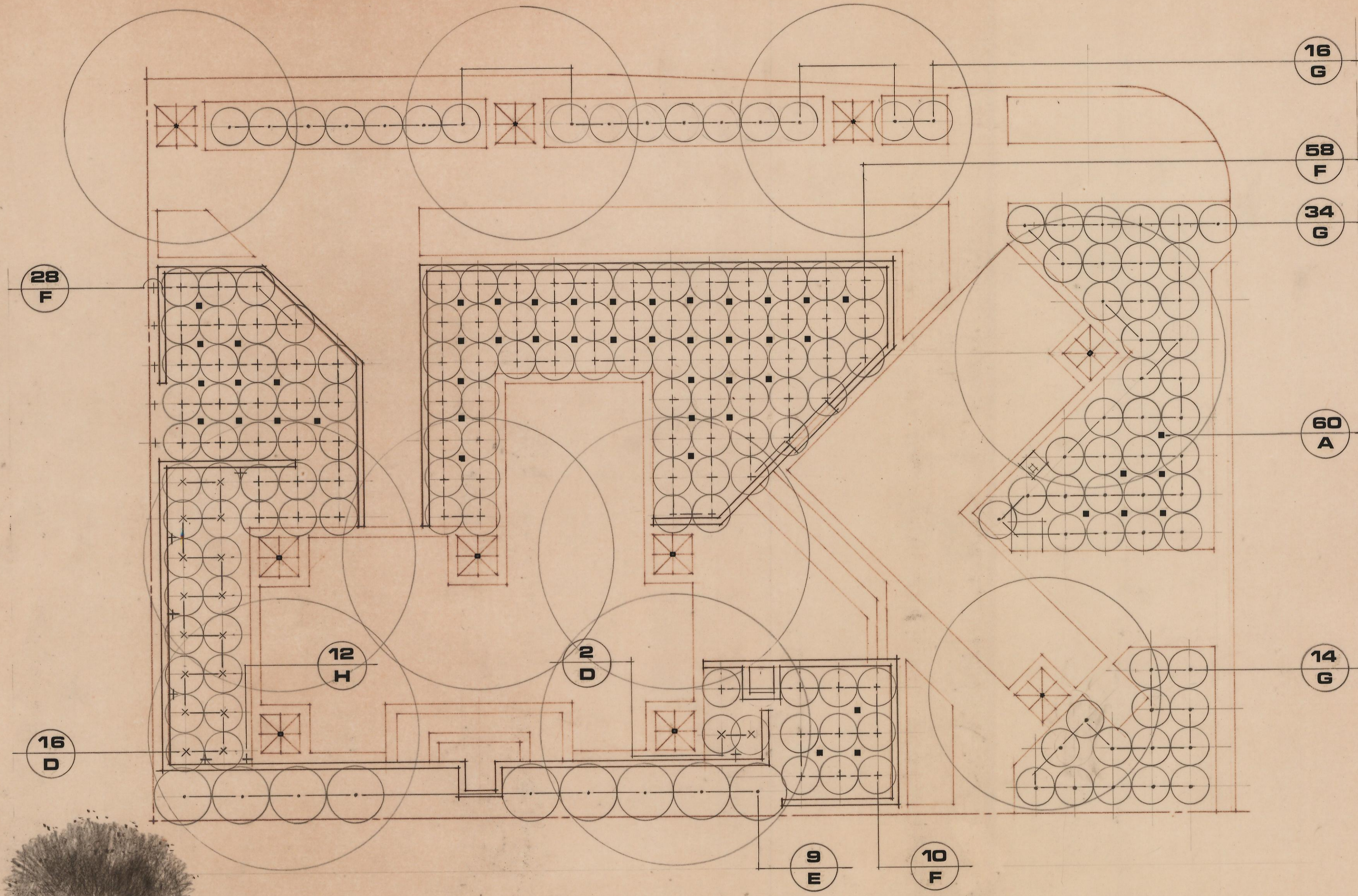


REVISIONS

DESIGN  
DRAWN







TREES	A	60	POPULUS TREMULOIDES CLUMP	QUAKING ASPEN (MIN. 3 STEM CLUMP)	10-12' Ø @
	B	6	QUERCUS ROBUR	ENGLISH OAK	NIC
	C	4	TILIA CORDATA 'GREENSPIRE'	GREENSPIRE LINDEN	NIC
SHRUBS	D	18	CHAENOMELES 'PINK BEAUTY'	FLOWERING QUINCE	Ø @
	E	9	PRUNUS LAUROCERASUS NANA	DWARF ENGLISH LAUREL	24-30' Ø @
	F	96	PL. STO LUTKEN	OTO LUTKEN LAUREL	18-24' Ø @
	G	64	PYRACANTHA COCCINEA LOWBOY	LOWBOY PYRACANTHA	Ø @
VINES	H	12	PARTHENOCESSUS TRICUSPIDATA 'VEITCH'	BOSTON IVY	1' Ø @ CONT.

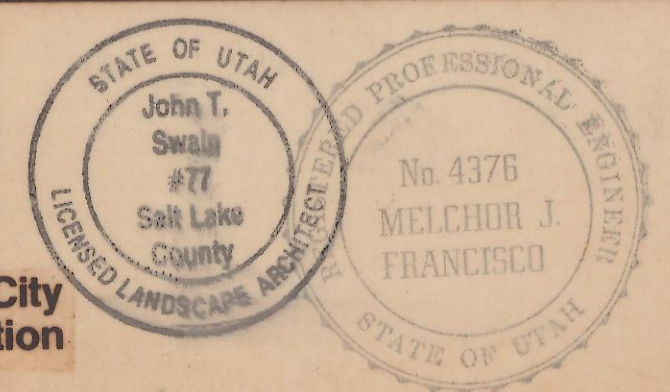


DRAWING No.  
**9 OF 10**  
ACCT.  
DATE

# CITY WELL MINI PARK

500 EAST 800 SOUTH · SALT LAKE CITY, UTAH

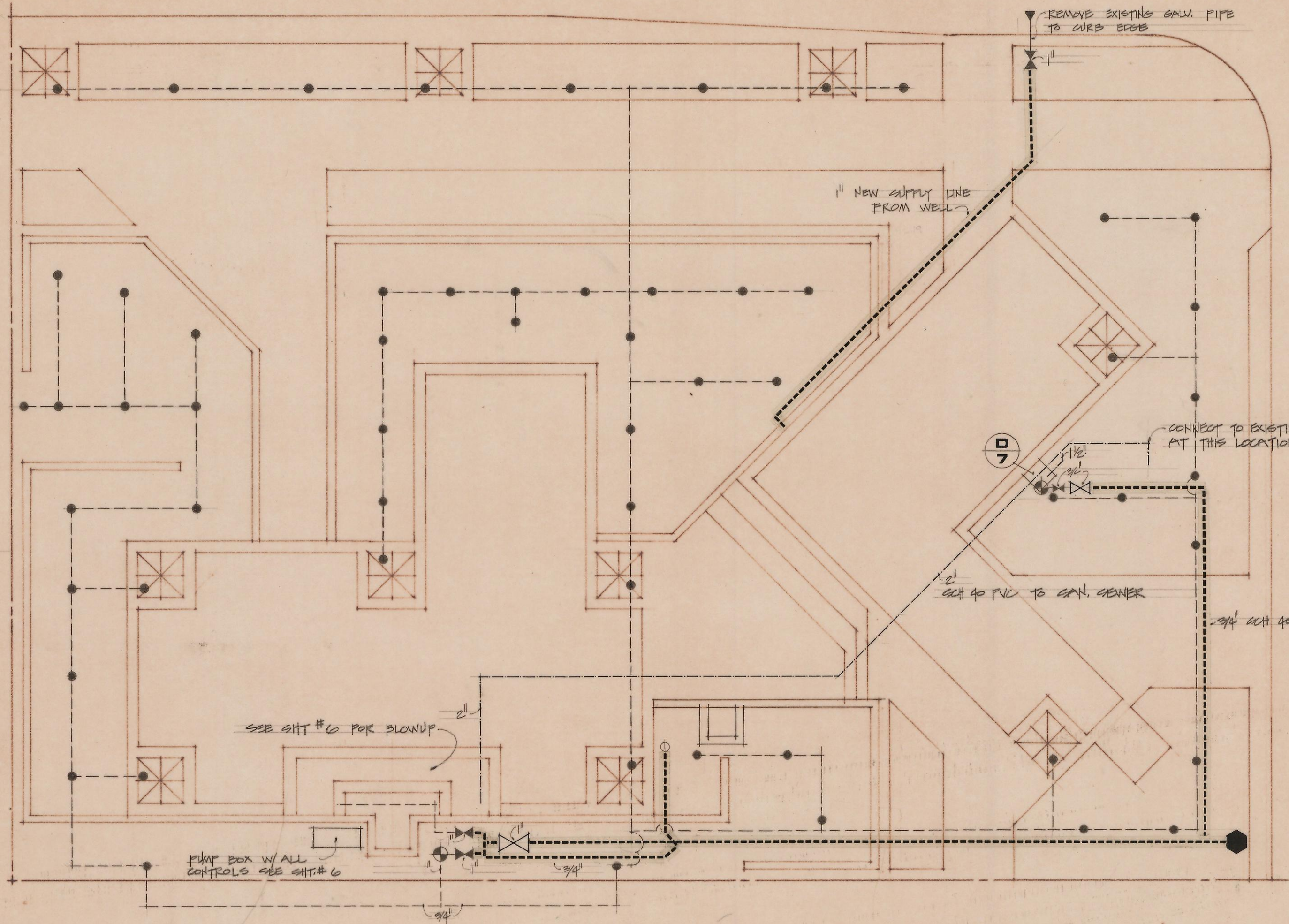
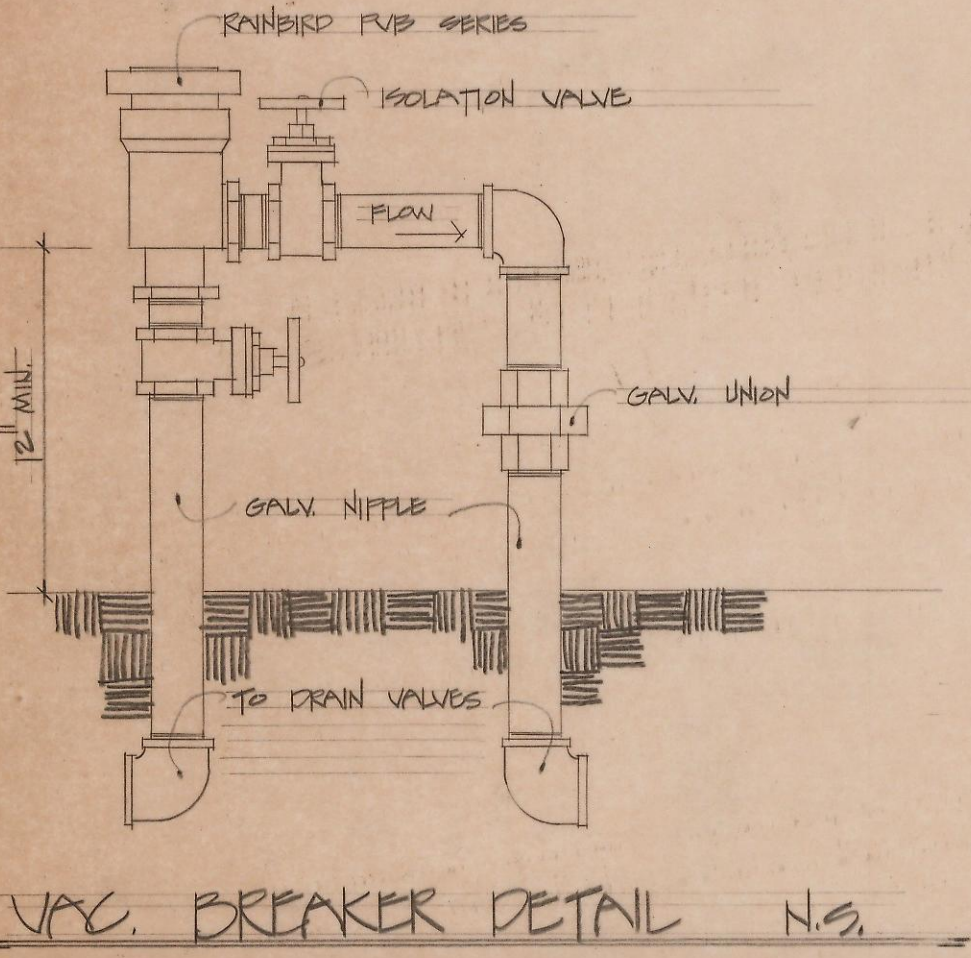
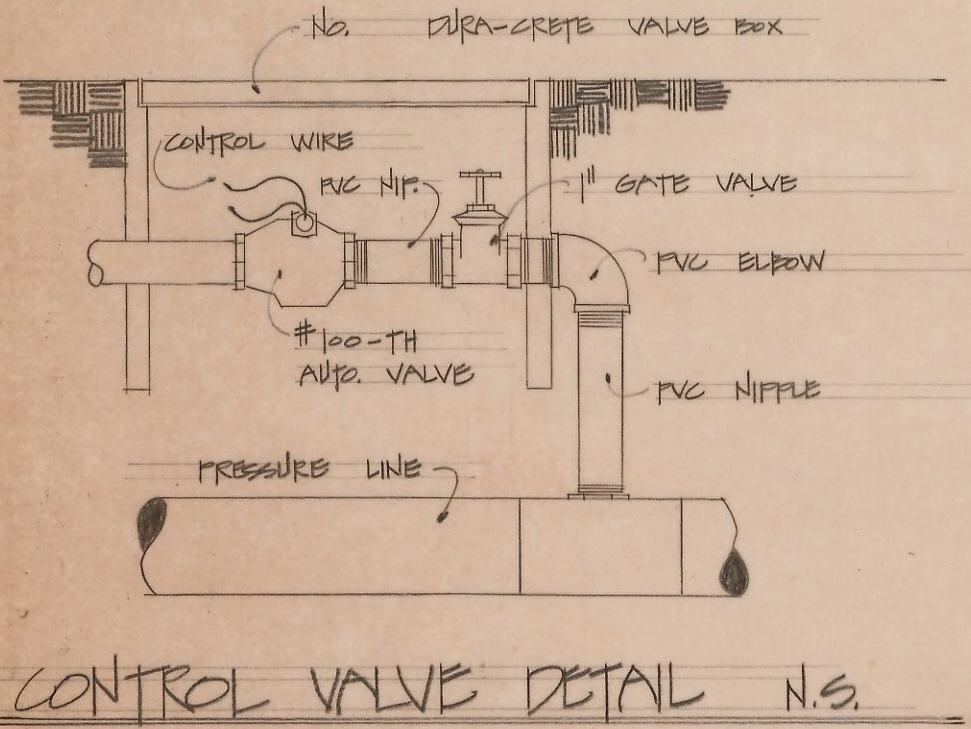
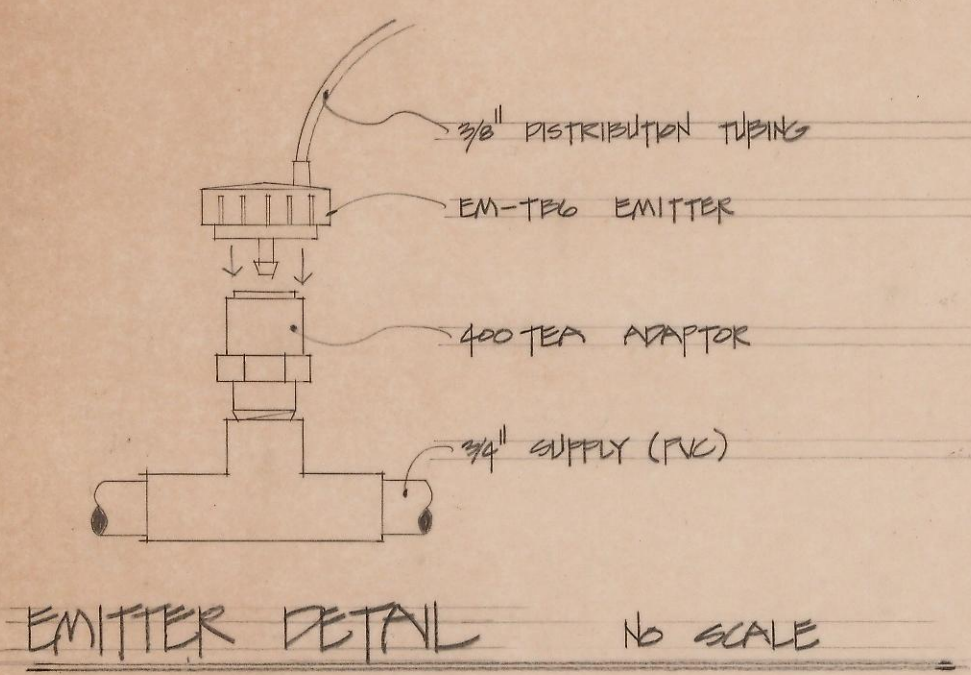
Your Salt Lake City  
Parks & Recreation



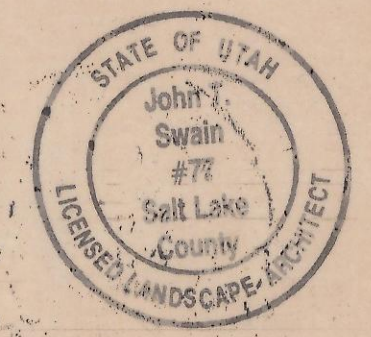
REVISIONS


DESIGN  
DRAWN





SYMBOL	DESCRIPTION
⊙	RAINBIRD #35 QUICK COUPLING VALVE
●	EM-TBG DRIP EMITTER
⊕	#100-TH THERMAL HYDRAULIC REMOTE CONTROL VALVE
⊗	BRASS GATE VALVE (SIZE AS INDICATED)
⊠	VACUUM BREAKER ASSEMBLY: RAINBIRD FVB SERIES W/GATE VALVES (SIZE AS INDICATED); W/ 3/4" MANUAL DRAINING BOTH UPSTREAM & DOWNSTREAM OF VACUUM BREAKER
●	CONNECTION W/ MAIN WATER SUPPLY W/ 1" METER & 1" STOP & WASTE VALVE
---	CLASS 200 PVC; ALL PIPE NOT SIZED TO BE 3/4"
---	SCH. 40 PVC; SIZE AS NOTED - TIE TO EXISTING SAN. SEWER
---	SCH 40 PVC PRESSURE LINE



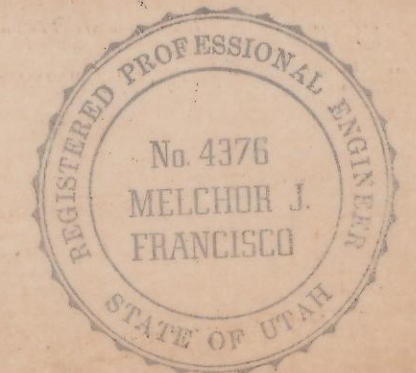
1/8" = 1'-0"  
IRRIGATION PLAN

DRAWING No.  
**10 OF 10**  
ACCT. DATE

# CITY WELL MINI PARK

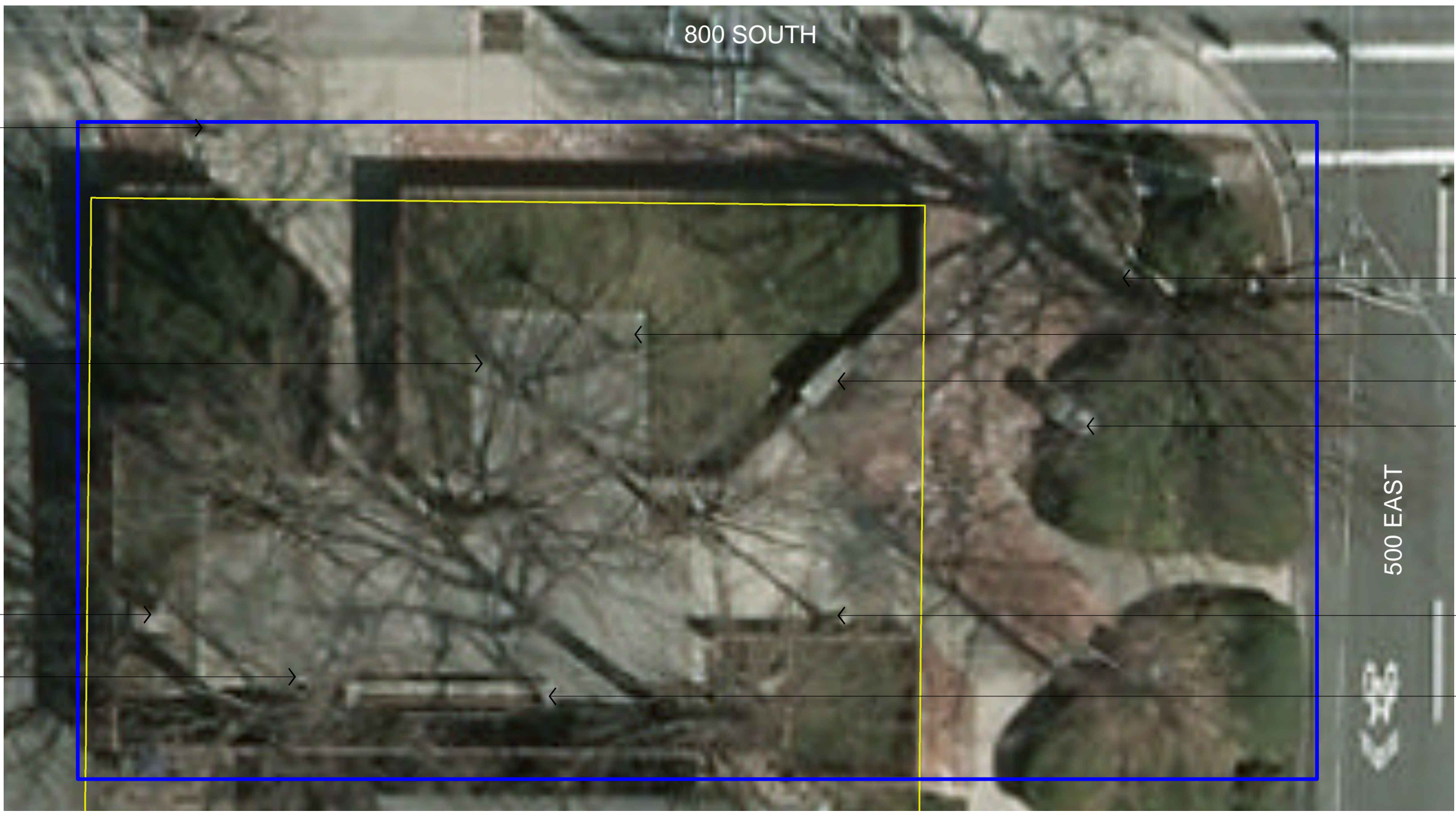
500 EAST 800 SOUTH • SALT LAKE CITY, UTAH

Your Salt Lake City  
Parks & Recreation

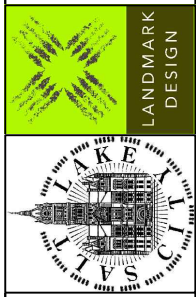


REVISIONS  
\_\_\_\_\_  
DESIGN  
DRAWN





Imagery taken from AGRC's High Resolution Ortho-Photography (HRO) 6-inch resolution color aerial photography, 2012.



**CALLOUT\_DESCRIPTIONS**

- |   |   |                     |
|---|---|---------------------|
| ① LIGHT FIXTURE   | ③ SCULPTURE   | ⑤ CONCRETE REMAINS  |
| ② BENCH   | ④ ARTESIAN WELL   | ⑥ TERRACED PLANTERS |
| <span style="border: 2px solid blue; display: inline-block; width: 15px; height: 10px;"></span> APPROXIMATE PARK BOUNDARY | <span style="border: 2px solid yellow; display: inline-block; width: 15px; height: 10px;"></span> PARCEL BOUNDARY |                     |

