

Revised  
City Council Announcements  
Packet Day September 11, 2014

**A. For Your Information**

1) Friday September 12, 2014 Utah Transportation Commission Meeting at 8:30 a.m. (Agenda Attached)

- The Council is invited to attend the Transportation Commission Public Meeting held tomorrow, Friday Sept 12, 2014 8:30 a.m. held in the Chambers, Rm 315 of the City and County Bldg.
- There will be time on the agenda at the beginning of the meeting for public comments and presentations concerning transportation matters on local State highways.

2) Information and Update on Sugar House PCE Plume  
(tetrachloroethylene (PCE) groundwater contamination)

- The Administration has been working with the Environmental Protection Agency (EPA) and Utah Department of Environmental Quality (UDEQ) regarding groundwater contamination near the water well in Sugar House, approximately 2100 South and 1700 to 2100 East. Attached is an update and information paper from UDEQ. (It should be noted that the water well has not been in use while contamination – even below the allowable threshold – was detected.)
- **Current status** - The EPA will conclude some additional testing through November. Following that, they will be looking to Salt Lake City elected officials for a decision on whether to declare the area a **“Super Fund” site**. Once the final testing is done and the Administration forwards a recommendation, this will be brought back before the Council.

➤ *Please let staff know if you have any questions.*

# Additional Announcements

## September 16, 2014

### **Information Needed by Council Staff**

#### **A. Speed to Feed Rally**

Council Members Rogers and Penfold are sponsoring a team of 8 go-kart drivers to participate in the Utah Food Bank's "Speed to Feed Rally." The team will participate in a qualifying race to be completed no later than September 25. The winning driver will then compete in the final race event on October 11<sup>th</sup>. Communications budget funds (\$500) will be used to sponsor the team.

- Are Council Members interested in participating as a team in the qualifying race with the winner competing in the final race on October 11<sup>th</sup>?

#### **B. Horse-Drawn Carriage Amendments**

The Chair is expressing an interest in scheduling a discussion at an upcoming work session discussion to ban horse carriages in the City (with the exception of special events/parades).

- Is the Council supportive of asking staff to work on this issue and schedule the discussion?

#### **C. California Energy Trip Report**

Council Members Garrott and Mendenhall would like to schedule time on an upcoming agenda to review their visit to California regarding Alternative Power.

- Would the Council like to schedule the report?

#### **D. Campaign Finance Reform**

Council Member LaMalfa is requesting that the issue of Campaign Finance reform be scheduled. Council Chair Luke indicated the intention to do so by the end of the year. The Council will need to discuss the possibility of funding a study related to this topic.

# September 2014 Transportation Commission Meeting

Friday, September 12, 2014 - 08:30 a.m.  
Salt Lake City Council Chambers  
451 South State Street  
Salt Lake City, Utah  
801-965-4103

## AGENDA

### APPROVAL OF MINUTES


1.

[Fact Sheet - Approval of Minutes](#) 

### LOCAL AREA PRESENTATION BY REGION TWO

2.

[Fact Sheet - Local Area Presentation by Region Two](#) 

[Presentation - WFRC](#) 

### PUBLIC COMMENTS

3.

### UDOT SCOREBOARD

4.

[Fact Sheet - Scoreboard](#) 

[Report - Construction](#) 

[Report - Safety](#) 

### PLANNING AND PROGRAMMING 2014 STIP Amendment #11

5.

A. Funding Adjustments at Post Construction

[Fact Sheet - Funding Adj at Post Construction](#) 

[Spreadsheet - Funding Adj at Post Construction](#) 

[Spreadsheet - Region Unprogrammed Balances](#) 

B. US-91; S. Smithfield to N. Smithfield Project - Exceed Pavement Preservation Limit

[Fact Sheet - US-91; S Smithfield to N Smithfield Project](#) 

[Map - US-91; N Logan to N Smithfield](#) 

C. Mobility Study on I-15 - New Project

[Fact Sheet - Mobility Study on I-15](#) 

D. I-215; SR-201 to 4700 South Project - Funding Adjustment

[Fact Sheet - I-215; SR-201 to 4700 South](#) 

[Map - I-215; SR-201 to 4700 South](#) 

E. SR-71; 2700 West Signal Reconstruction Project - Funding Addition

[Fact Sheet - SR-71; 2700 West Signal Reconstruction](#) 

[Map - SR-71; 2700 West Signal Reconstruction](#) 

F. Big Cottonwood Trail: Connect Existing Sections - Cancel Project

[Fact Sheet - Big Cottonwood Trail](#) 

[Map - Big Cottonwood Trail](#) 

G. South Jordan Bike Lanes Project - Cancel Project

[Fact Sheet - South Jordan Bike Lanes](#) 

[Map - South Jordan Bike Lanes](#) 

H. I-70; Box Culvert Wingwall Repairs Project - New Project

[Fact Sheet - I-70; Box Culvert Wingwall Repairs](#) 

[Map and Photos - I-70; Box Culvert Wingwall Repairs](#) 


I. I-70; Fence Replacement, 3 Locations Project - New Project

[Fact Sheet - I-70; Fence Replacement](#) 

[Map - I-70; Fence Replacement](#) 

J. SR-31; Retaining Walls at MP 4.1 & 4.3 - New Project

[Fact Sheet - SR-31; Retaining Walls](#) 

[Map and Photos - SR-31; Retaining Walls](#) 

K. SR-7; Warner Valley to Washington Dam Road Project - Funding Adjustments

[Fact Sheet - SR-7; Warner Valley to Washington Dam Road](#) 

[Spreadsheet - SR-7; Warner Valley to Washington Dam Road](#) 

L. I-80; Judd and Hobson Lane Bridges, C-433 & C-434 Project - Funding Adjustment

[Fact Sheet - I-80; Judd and Hobson Lane Bridges](#) 

[Map - I-80; Judd and Hobson Lane Bridges](#) 

M. SR-270; 900 South Connector over 200 West & West Temple - Scope and Funding Adj.

[Fact Sheet - SR-270; 900 South Connector](#) 

[Map - SR-270; 900 South Connector](#) 

N. US-40; Bridge Preservation Near Jordanelle Reservoir Project - New Project

[Fact Sheet - US-40; Bridge Preservation Near Jordanelle Reservoir](#) 

[Map - US-40; Bridge Preservation Near Jordanelle Reservoir](#) 

O. WFRC Requests

1. 1300 East; Pioneer Road to 13200 South Project - Funding Addition

[Fact Sheet - 1300 East; Pioneer Road to 13200 South](#) 

[Map - 1300 East; Pioneer Road to 13200 South](#) 

2. 500 West; North Temple to 300 North Project - Scope Change

[Fact Sheet - 500 West; North Temple to 300 North](#) 

[Map - 500 West; North Temple to 300 North](#) 

3. 5600 West; 6300 South to 7000 South Project - Funding Addition

[Fact Sheet - 5600 West; 6300 South to 7000 South](#) 

[Map - 5600 West; 6300 South to 7000 South](#) 

STATE AIRCRAFT RENTAL RATE INCREASES - INFO ONLY

6.

[Fact Sheet - State Aircraft Rental Rate Increases](#) 

INFORMATIONAL ITEMS

7.

A. FHWA Report

B. Commission Committee Reports

C. Upcoming Transportation Commission Meetings

## **Sugar House Park Plume – Briefing for the Salt Lake City Council**

*Prepared by the United States Environmental Protection Agency, Region 8, and the  
Utah Department of Environmental Quality  
August 2014*



### **Agency Contact Information**

Ryan Dunham  
(303) 312-6627  
[Dunham.ryan@epa.gov](mailto:Dunham.ryan@epa.gov)

Craig Barnitz  
(801) 536-0071  
[Cbarnitz@utah.gov](mailto:Cbarnitz@utah.gov)

Victor Ketellapper  
(303) 312- 6578  
[Ketellapper.victor@epa.gov](mailto:Ketellapper.victor@epa.gov)

Dale Urban  
(801) 536-4145  
[Durban@utah.gov](mailto:Durban@utah.gov)

## BRIEFING OBJECTIVES

- Provide a brief overview of the project area
- Summarize potential public health threats
- Discuss agency next steps and various options for Salt Lake City to consider
- Receive Salt Lake City Council input on preferred option(s)

## SITE OVERVIEW

- The Sugar House Park plume is an area of tetrachloroethylene (PCE) groundwater contamination
- PCE (aka perc) is a man-made chemical (commonly used in dry cleaning) with adverse human health and environmental impacts including being a likely human carcinogen
- Discovered in the Sugar House Park municipal well in 1988, PCE-contaminated groundwater is in a few distinct but different areas covering approximately 0.8 square miles
- Multiple sites have been investigated in an effort to find the source of PCE to the Sugar House well (i.e., Trailside Cleaners, 2100 S. 2100 E. Plume, 2100 S. and Highland Drive Plume)
- Groundwater contamination was likely caused by several dry cleaners
- Suspected “source area” identified near intersection of 2100 South 2100 East

*Refer to map on page 4*

## PUBLIC HEALTH THREATS

### Contaminated Drinking Water

- SLCPU actively manages their water system to continue providing safe drinking water – they have removed 2 PCE impacted wells from service; another potentially at risk
- Concentrations in the Sugar House well are above the Federal drinking water standard
- Treatment to remove PCE will be needed if the impacted wells are placed back into service
- Will limit future use of the resource if left unaddressed; the problem could get worse

### Vapor Intrusion/inhalation of contaminated indoor air

- Concentrations of PCE as high as 7,060 ppb found in near-surface groundwater in 1995 in the suspected source area
- Residential sub-slab\* and indoor air data from 2009 exceed current screening level health-based benchmarks
- More than one round of air sampling is recommended to support public health decision making

*\*Data were modeled using a screening level vapor transport model to estimate a theoretical indoor air concentrations*

## CURRENT ACTIONS: INDOOR AIR SAMPLING PROCESS & SCHEDULE

The EPA is working with the State and the City to conduct another round of indoor air sampling

The objectives of this investigation are to:

- Identify the area(s) of concern for vapor intrusion
- Determine the current risk and factors that may contribute to potential (or future) risk for vapor intrusion
- Provide more data for decision makers to consider in determining an appropriate response

## CURRENT ACTIONS (Cont.):

### Planning

July - August 2014

- Site reconnaissance (**COMPLETED**)
- Distribute and finalize sampling Plan (**UNDERWAY**)

### Data Collection

September - November 2014

- Phase 1: Indirect sampling to define area(s) of concern (utilize groundwater and soil gas sampling)
- Phase 2: Within area(s) of concern, conduct direct sampling from a sub-set of homes (utilize sub-slab and air sampling inside homes)

### Reporting

December - February 2015

- Laboratory analysis and data validation
- Provide results to individual homeowners and finalize and distribute results report

## GOING FORWARD

- Cleanup of soils in the source area may be needed to minimize the long-term impacts to groundwater, although the scope and cost are unknown at this point
- SLCPU has stated that they have plans to continue to manage the drinking water threat
- The additional indoor air sampling (in progress) will provide more certainty about the risk of vapor intrusion and the need for vapor mitigation

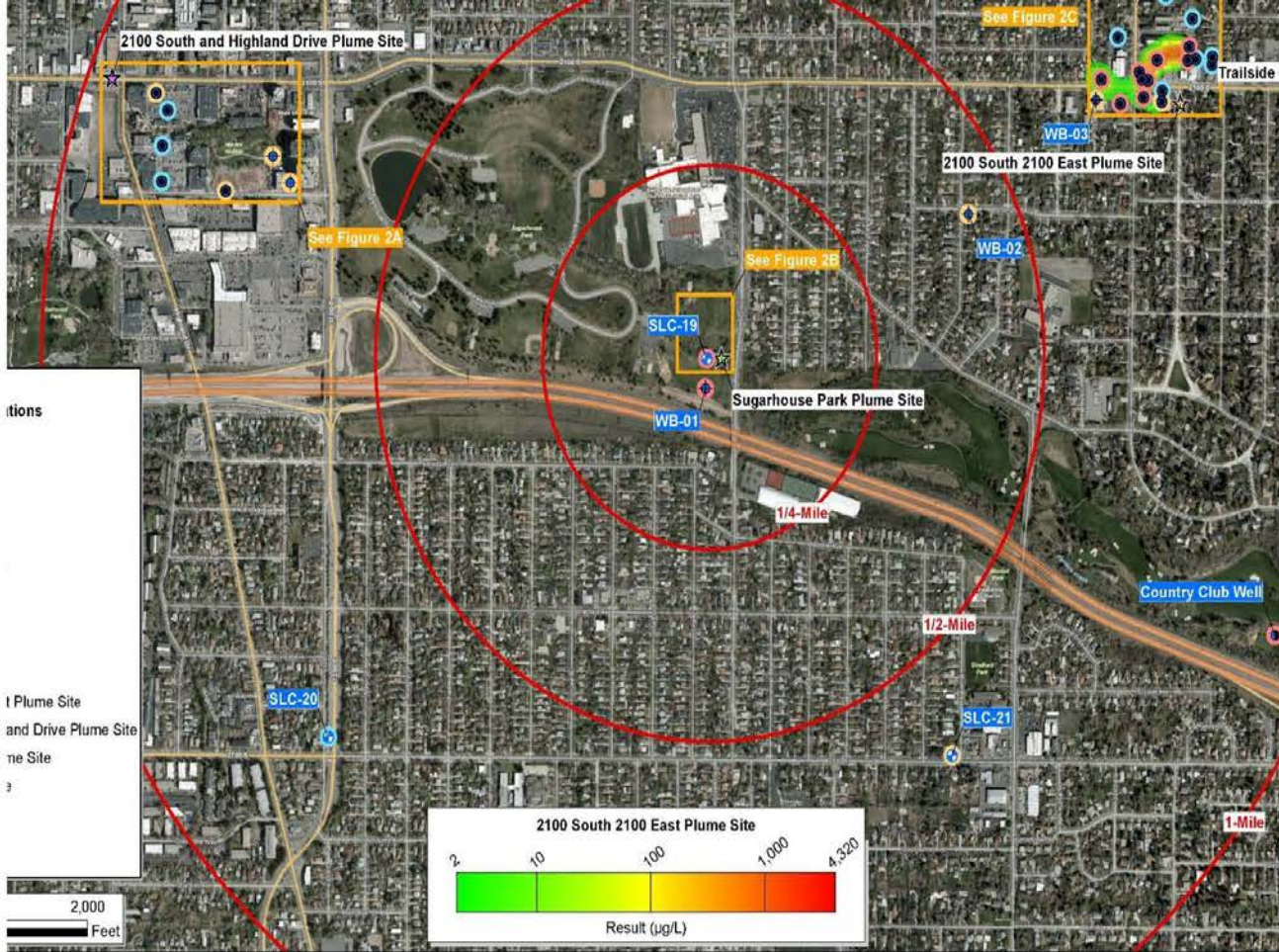
## POTENTIAL OPTIONS

- The National Priorities List (NPL) of the Comprehensive Emergency Response, Compensation and Liability Act (aka Superfund) is a Federal program that brings financial and technical resources to a site of this magnitude (assuming it is necessary for cleanup of soils in the source area, vapor intrusion mitigation and assisting with groundwater cleanup to protect drinking water wells)
- The City can request that the EPA move forward with the NPL process now or wait for the indoor sampling results before considering options. However, waiting to see the results would likely delay the initiation of the NPL process until September 2015 at the earliest
- The State Voluntary Cleanup Program may be another option to address contamination at the source. In this scenario, the VCP applicant should meet eligibility requirements and site cleanup should address both on- and off-site impacts to mitigate any possible risk to public health and the environment (including vapor intrusion)
- Salt Lake City could consider applying for a federal Brownfields assessment grant to conduct additional investigations in the area to better delineate the extent and degree of subsurface contamination which may facilitate property redevelopment for beneficial and sustainable reuse

## FINAL THOUGHTS

- Plans for the EPA to conduct an indoor air investigation this fall are moving forward
- The EPA is looking for the Council's feedback on the preferred option to address these issues
- Waiting for indoor air results would likely delay the EPA's ability to propose the site to the NPL until September 2015 at the earliest
- However, waiting would provide greater certainty about the public health threat which could be a factor if a non-NPL solution is available/practical (e.g., State Voluntary Cleanup Program)





**Figure 2**  
Groundwater Modeling for Detected PCE Concentrations

Sugarhouse Park Plume Site  
Salt Lake City, Utah

Environmental Technologies, Inc.

Source: Utah AGRC HRO 6 Inch Orthophotography, 2012

Pre